

MUSIC THAT IS *Personal*



OKM music
OKLAHOMA'S PREMIER MUSIC FESTIVAL

SEPT 5.6.10
2020
36TH SEASON

FRANK PHILLIPS HOME PAINTING BY **RAGON STEELE**

PROVIDING ENERGY. IMPROVING LIVES.



At Phillips 66, supporting our people, our environment and our communities guides everything we do.

That's why we're proud to support the OKM Music Festival.



@Phillips66Co



Table of Contents

- 5** Welcome Letter from Mary Lynn Mihm
Chairman, OK Mozart Inc.
- 7** Visitors' Information
- 9** Festival Fundamentals
Bartlesville Community Center
- 10** COVID-19 Safety Precautions
- 11** Ludwig van Beethoven Historical Timeline
- 12** In Memoriam
Kenneth Smalley
- 13** In Memoriam
Celeste Barrett, Donald Cone
- 14** In Memoriam
Veronica Cecelia Martin Cox
- 15** In Memoriam
Mike May, Margaret Williford
- 16** In Memoriam
Margaret Williford (continued), Leah Anderson
- 17** In Memoriam: OKM Patrons
- 18** Reformatted Festival Schedule
How to Live Stream Virtual Performances
- 20** Tina Guo, Live
September 5, Live Stream
- 24** Dallas String Quartet, Live
September 6, Live Stream
- 28** Festival Finale Performance
September 10, Clark Gibson Quintet and Balsam Range
- 34** 2020 Festival Artist
Ragon Steele
- 36** July "Especially for Kids" Series
- 37** Photos from July "Especially for Kids" Series
- 38** Music Education
- 39** Oktoberfest 2019
- 39** Christkindl Market 2019
- 40** Our History
- 41** Previous Artists
- 44** OKM Patron Giving Benefits
- 46** 2020 Patron List
- 48** The People of OKM Music
- 50** Program Advertisement Index

View This Program Online



With a smart device, hover over this QR code with a camera application. A dialogue box should appear to direct you to the virtual program.

Tune in to your finances!

Whether you're looking to buy your first home, purchase a new car or just save for a rainy day, we have financial tools to help. Being a credit union member means **lower** rates and fees, **higher** dividends and **superior** service!

Join today at: ***TruityCU.org/Join***



Federally Insured by NCUA.

501 S Johnstone | 2612 SE Washington Blvd | 800.897.6991



Mary Lynn Mihm

ATTORNEY AT LAW

515 SE THIRD STREET
BARTLESVILLE, OK 74003
TELEPHONE: 918-336-6536
EMAIL: MIHMESQ@AOL.COM



SERVING BARTLESVILLE SINCE 1998

Welcome to OKM's 36th Festival

OKM Music Chairman of the Board: Mary Lynn Mihm

Dear friend of OKM Music,

Thank you for making OKM Music a beloved ART organization of Northeastern Oklahoma. We are thrilled to celebrate the 36th OKM Annual Music Festival, September 5, 6, and 10, with you. This season focuses on a personal music experience for all ages and features something for everyone. This year has been an unusual and difficult year for the arts, and it is our goal at OKM Music to host a music festival that will bring smiles to your face, allow you to relax, keep you safe through physical distancing, all the while allowing you to enjoy wonderful concerts.

OKM is very excited to be able to bring two amazing concerts to you in your very own living room through live streaming. This festival kicks off on September 5 at 2:00 p.m., where gamers and music fans alike will enjoy the beautiful and talented Tina Guo. Guo is so excited to share her love of the cello with her more than 600,000 fans across the world and we are lucky to have a front row seat. Next, join us for an electrifying concert, featuring the fusion of classical and contemporary music with Dallas String Quartet on September 6 at 2:00 p.m. While we will miss seeing you in person, we hope you will enjoy these special online concerts. On September 10, at 6:00 p.m., get ready for a community concert with the Clark Gibson Quintet and the toe tappin' blue-grass award winning, Balsam Range, at the new Tower Center at Unity Square. We are very excited to present this concert to the community as a free concert - it is our gift to you! OKM will have a physical distancing plan for the evening and we ask you to make an advance RSVP for this performance.

The OKM Music Festival has postponed its Showcase series to the 37th Festival. With limited indoor seating, the need for physical distancing, and in an effort to protect our musicians and patrons, this seemed like the best option. OKM is proud of its Showcase series and has a few surprises for patrons in 2021.

At OKM, we believe music is the soul of our community, the passion of our artists, and the common language of all. OKM Festival is more than a music festival — OKM Festival is about bringing people together and building community.

Sincerely,



Mary Lynn Mihm
Chairman of the Board
OK Mozart Inc.

*Serving Bartlesville with over 100 years
of combined experience.*



Securities Offered Through Dominion Investor Services, Inc.
Member FINRA and SIPC

TEAM THILL

*Buying or Selling a Home?
Call Us for Results!*

McGraw
REALTORS®

© 2020 McGraw REALTORS®. All Rights Reserved. McGraw REALTORS® has relied upon information provided by others. Third parties, law authorities and official government records and may contain inaccuracies of which McGraw REALTORS® is not aware.

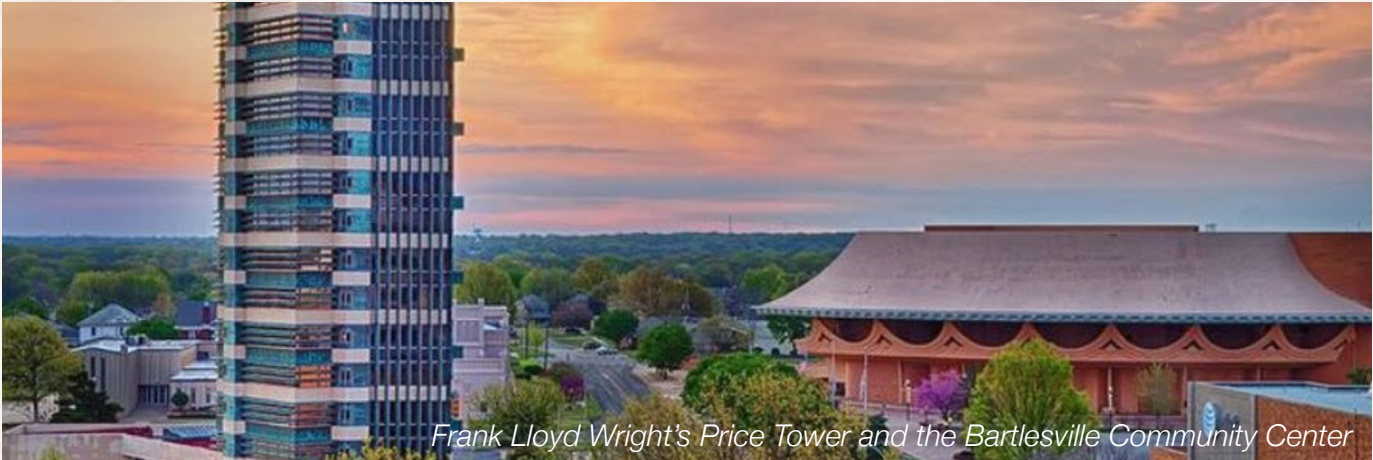


Howard & Shawna Thill 918-914-0558



Visitors' Information

Bartlesville is more than just another dot on the map!



Frank Lloyd Wright's Price Tower and the Bartlesville Community Center

Uniquely Oklahoma, Bartlesville is eager to welcome you to a town full of history, arts, and culture. Named in 2006 as one of America's Dozen Distinctive Destinations by the National Trust for Historic Preservation, visitors to Bartlesville will find intriguing architecture and art, roaming buffalo and oil rich history. Bartlesville has unique architectural structures such as Frank Lloyd Wright's only skyscraper - the Price Tower - a National Historic Landmark; the world-renowned Woolaroc Museum and Wildlife Preserve, listed in the National Register of Historic Places, and exhilarating events such as the annual OKM Festival.

While visiting Bartlesville for the OKM Festival, you will have the opportunity to experience world-class musicians and one-of-a-kind entertainment. Bartlesville also invites you to take in the many other interesting offerings of this Oklahoma destination.

We invite you to let the Bartlesville Convention & Visitors Bureau assist you in planning your OKM Festival vacation. We know you will enjoy the Festival, and we hope to make your visit as memorable as the music!

Hotel and visitor information provided courtesy of the
Bartlesville Convention & Visitors Bureau
Toll Free: (800) 364-5708 • www.visitbartlesville.org

Local Attractions

Bartlesville Area History Museum
Bartlesville Public Library
Dewey Hotel Museum
Discovery 1 Park/Nellie Johnstone No. 1
Frank Lloyd Wright's Price Tower
Frank Phillips Mansion
Kiddie Park
La Quinta Mansion/Oklahoma Wesleyan University
Osage Hills State Park
Phillips 66 Museum
Prairie Song I.T.
Steam Locomotive AT&SF No. 940
Tallgrass Prairie Preserve
Tom Mix Museum, Inc.
Wall of Honor Veterans Memorial
Woolaroc Museum & Wildlife Preserve

Local Hotels

BarDew Valley Inn	Holiday Inn
Budget Inn	Inn at Price Tower
Candlewood Suites	Knights Inn
Days Inn	Motel 6
Econo Lodge	Skyline Motel
Fairfield Inn & Suites	Travelers Motel
Hampton Inn	
Hilton Garden Inn	

Bartlesville Community Center

A Perfect Site



◇ **Connect With Friends** ◇

See A Show



Rent A Space



Visit **BartlesvilleCommunityCenter.com** or
call **918-337-2787** for more information.

Festival Fundamentals

OKM Music Annual Festival and Bartlesville Community Center

Welcome to the 2020 OKM Festival. In the event of inclement weather for our September 10 performance, the event will move indoors to the Bartlesville Community Center. As our guests, we ask that you respect the Bartlesville Community Center's courtesy points throughout the areas occupied by OKM Music.

- Before entering the Bartlesville Community Center, please dispose of all food and beverages.
- Before the start of the performance, please turn off your cell phones.
- Please be aware that use of tobacco products is not permitted in any part of our venue.
- Before concert announcements are made, the house lights in the auditorium will dim for a few seconds. Please refrain from talking while announcements are being made from the stage.
- As a matter of courtesy, latecomers will be seated only during an appropriate break in the music.
- Please note that for concerts held at the Bartlesville Community Center, a physical ticket is required. For performances held off-site, (if tickets purchased before concert), check in with OKM host/hostess.
- Wheelchair access and a listening system for hearing-impaired audience members are available. Please inform the box office at the time you place your ticket order if you have need of a particular accommodation.
- In the event of a power failure, emergency systems will restore lighting in 25 seconds. Please remain seated while the power is being restored. If an emergency requires immediate evacuation, you will be advised by an announcement. Trained ushers will assist in supervising evacuation procedures.
- The use of recording equipment is strictly prohibited.
- Restrooms are located in the north and south lobbies near the entry areas, as well as at the back of the auditorium at the top of the south stairs.



The September 10 Performance will be held at the Tower Center at Unity Square in Downtown Bartlesville

Bartlesville Community Center, 300 SE Adams

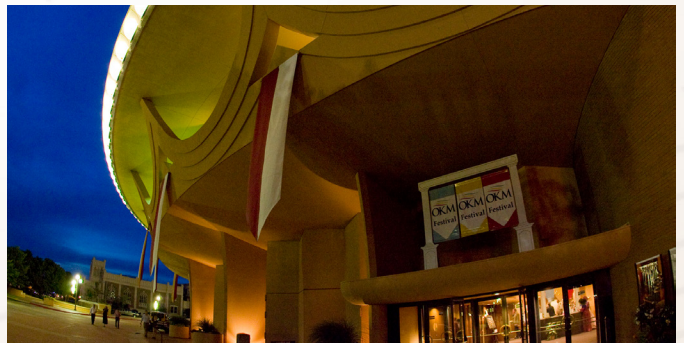
Normal daily box office hours:

Monday - Friday.....9:00 am to 5:00 pm

OKM Music, 415 S. Dewey Ave.

Normal daily box office hours:

Monday - Friday.....9:00 am to 5:00 pm



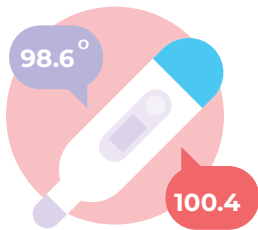
In the event of inclement weather, the Sept. 10 performance will be moved indoors to the Bartlesville Community Center.

COVID-19 Safety Precautions

COVID-19 Disclaimer:

An inherent risk of exposure to COVID-19 exists in any public place where people are present. COVID-19 is a contagious disease that can lead to severe illness and death. According to the Centers for Disease Control and Prevention, senior citizens and guests with underlying health conditions are especially vulnerable. By visiting OKM's in-person performance, you voluntarily assume all risks related to exposure to COVID-19.

In addition of maintaining physical distancing (6ft.) on Thursday, September 10, the following safety precautions will be followed:



Have you checked your temperature?

If you are ill or are running a fever, please do not attend the concert on September 10. Using contact-less thermometers, OKM staff will be checking attendees. If temperature is over 100.4, you will kindly be asked to leave.



Facial coverings are encouraged

While masks are not required, they are strongly encouraged. OKM will have extra face masks available upon request.



Wash your hands

For your convenience, OKM will have hand sanitizing stations available, as well as individual hand-sanitizers available.

For those who wish to watch the September 10 performance online, visit:
www.facebook.com/okmfestival

Celebrating Ludwig van Beethoven

OKM Music is celebrating Beethoven's 250th birthday this year!

Timeline of Beethoven's Life

written by Rachel Foote

1770 - Born in Bonn, Germany. He was baptized on December 17th and was most likely born on the 16th.

1778 - Plays first concert at age 8. Beethoven's abilities were quickly noticed by his father who often told the public that young Beethoven had been born in 1772 to improve his chances of being lauded as a child prodigy.

1783 - C.G. Neefe, Beethoven's first significant teacher, acknowledges that twelve-year old Beethoven has the potential to be the next Mozart. Neefe was responsible for introducing Beethoven to the works of J.S. Bach.

1787 - Visits Vienna. It is uncertain whether Beethoven was actually able to meet Mozart. He did, however, hear him perform on this visit. Beethoven greatly adored Mozart, and wished to study with him. He often feared he was inadvertently plagiarizing Mozart's works in his own compositions.

1792 - Moves to Vienna to study with Haydn. According to Waldstein, he was to, "receive the spirit of Mozart from the hands of Haydn."

1797 - Signs of permanent deafness arise. At just twenty-six years old, Beethoven fears the deterioration of his hearing. He was plagued with the growing sensation that it was becoming a chronic condition. Though his hearing was decreasing, his compositional output was doing just the opposite.

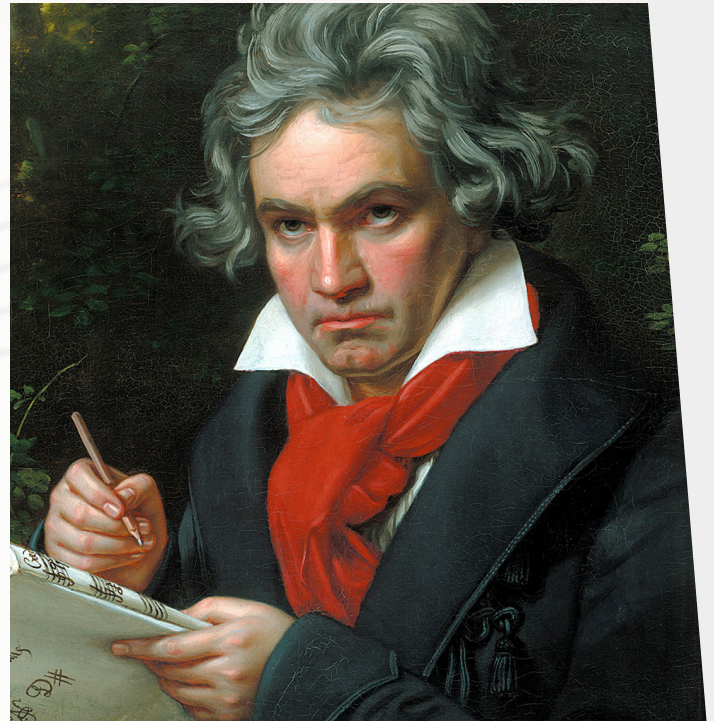
1800 - Published 1st Symphony.

1801 - Published his first string quartet: Op. 18, No. 1

1802 - Wrote the Heiligenstadt Testament. As Beethoven became increasingly aware of the permanence of his hearing loss, he writes a will and testament to his brothers and the public at large. This testament was never shared during his life, but was discovered the October after his death. Beethoven, increasingly aware of his loss of social skills as well as his most prized of human senses, covets the release of death. He writes that it is his art alone that pushes him to, "endure this wretched existence."

1803 - Begins writing the 3rd Symphony. This work initiated the period of time scholars label as the "heroic" era (1803 - 1812).

1806 - Publishes the 3rd Symphony, "Eroica." This work greatly challenged the duration, harmonic range, and motivic density found in symphonies up to this point. According to Beethoven, it was the greatest work he had yet written.



1808 - Publishes the 5th Symphony.

1809 - In Vienna during Napoleonic siege. Composes *Das Lebewohl*, Op. 81a* for Archduke Rudolph.

1812 - Beethoven, ever struggling to find love in a lasting relationship, writes a letter to the "Immortal Beloved." Countless students and scholars have sought to identify this unnamed woman.

1815 - Experiences major health deterioration and almost complete deafness. His brother, Carl, dies.

1818 - Nephew Karl lives with Beethoven.

1820 - Gains guardianship and takes his nephew, Karl, into custody. Beethoven views Karl as his "adopted son."

1824 - Writes the 9th Symphony, a work displaying Beethoven's love of brotherhood he sought to discover in humanity. He utilized a choir within the symphony, a truly unorthodox setting for a symphony.

1826 - Karl attempts suicide. Beethoven completes his last full string quartet, Op. 135.

1827 - Dies on March 26 at fifty-six years old.

In Memoriam

OKM Music is remembering those involved with and/or contributed to OKM that passed away between June 2019 through August 2020. Their passion for community, music and the arts will be forever remembered.

Kenneth L. "Ken" Smalley 1930 - 2019

Major & legacy contributor and former Board Director of OKM



Kenneth L. (Ken) Smalley was born in Custer City, Oklahoma, on February 18, 1930. His parents were Richard E. Smalley and Leila Floy (Ferguson) Smalley. The Smalley family moved to Weatherford, Oklahoma, where Ken attended school through the 5th grade. In 1941 the family moved to Clinton, Oklahoma where Ken graduated from high school in 1948, but not before leading the high school teams as a standout in football, basketball, and baseball. He entered Southwestern State College at Weatherford in 1949 and after completing his freshman year, transferred to the University of Oklahoma.

During his first year at OU, Ken saw a beautiful co-ed at a fraternity party. Even though he didn't get a chance to meet her that night, he told his roommate he had seen the girl he was going to marry. During his junior year, the Sigma Phi Epsilon social fraternity elected him president. One of his "duties" was to escort the fraternity sweetheart to a dance. The sweetheart was Janet M. Glasgow, the girl he had vowed to marry the first time he saw her. On September 5, 1953, his dream came true when they were married in her hometown, Edmond, Oklahoma.

After graduation from OU with a BS degree in engineering in 1954, Smalley joined Phillips Petroleum Company. His career with Phillips began in Dumas, Texas, in the Natural Gas Department. In 1955, he entered the US Army Corps of Engineers. He was stationed at Ft. Belvoir, Virginia; Ft. Carson, Colorado; and Ft. Leonard Wood, Missouri during his two years of service. After receiving his discharge as a First Lieutenant, Smalley rejoined Phillips. He advanced through several assignments in the Chemicals Department before being assigned to the International Department.

In 1964 he became Sales Manager for the Far East and Southwest Pacific with headquarters in Tokyo. In 1966 he was named President of Sodefine S.A. in Paris. In 1968, he moved to Brussels as Vice President, Sales for Phillips in Europe and Africa. In 1972, he was named President of Phillips Petroleum Chemicals Europe and Africa. During his assignment in Brussels, the Belgian government knighted him in the Order of Leopold for his role in developing industry in Belgium. In 1977 he returned to the Bartlesville, Oklahoma headquarters and was named Vice President of the Minerals Group in 1981. In 1985, he was elected Senior Vice President and a member of the Management Committee of Phillips. He was also named President of Phillips 66 Natural Gas Company in 1987. He was with Phillips for 38 years, retiring in 1992.

Smalley served on the Board of Directors of El Paso Corporation, El Paso Tennessee Pipeline Company and Gulf Terra Partners. He also served as a Director of WestStar Bank in Bartlesville. He was Chairman of the Board of the International School of Brussels, a director of OK Mozart, Inc., a Trustee of the Bartlesville Community Center Trust, and a member of Preston Hollow Presbyterian Church in Dallas.

The Smalleys had three daughters, Jill (Mrs. Tom) Arbour of Baton Rouge, Louisiana; Kathy (Mrs. Eric) Zolt of Los Angeles, California; and Lee Anne Smalley of Dallas. Jill and Tom have two sons: Robbie, married to Laura, and Jeff, married to Brittany, who gave Ken his great-granddaughter Ashby Claire. Lee Anne has a son, Will, and a daughter, Grace. Ken also has a sister, Mrs. Mary Lou Herndon of Tulsa, and a brother and sister-in-law, Mr. and Mrs. Jack Smalley of Phoenix. Ken's wife, Jan; his parents and his older brother, Richard, preceded Ken in death. Ken's daughters were startled on reaching adulthood to learn that they weren't the center of the universe to everyone, but at least they remained so to their father. And, generally acclaimed as the greatest grandfather ever, Pop had a close personal and individual relationship with each of his four grandchildren and was well on his way to the same with the newest addition to the family, his great-granddaughter.

OKM Music dedicates the 36th Festival to Kenneth L. Smalley. Thank you, Ken, for your dedication and passion to the arts in Bartlesville!

Celeste Barrett

1952 - 2019

Former soloist and performer for OKM



Celeste Ann Barrett went to be with the Lord on November 5, 2019 at Journey Home with her loving partner, Becky Grubbs, by her side.

She was born Celeste Ann Mullen on November 28, 1952 in Bartlesville, Oklahoma where she was the very first baby born at the new Jane Phillips Hospital. She attended Bartlesville schools, graduated from Sooner High School, where she sang in the Sooner High Varsity Choir with Noel Kaiser, and Southern Methodist University, where she studied voice with Bruce Foote and sang with Dr. Lloyd Pfautsch. In 1974 Celeste relocated to Los Angeles to begin her singing career. While there, she sang at the Crystal Cathedral in Garden Grove, CA and with the Blossom Festival. She also sang and toured with the Roger Wagner and Norman Luboff choirs.

After two years, Celeste moved to Europe to continue her opera career in Zurich, Switzerland and for many years with Theatre Hagen of Hagen, Germany. While in Hagen, she sang multiple leading roles, including Evita Peron in Evita. She also directed children's choruses, established the Celeste Barrett Quintet, a jazz ensemble, and nurtured many budding singers.

In 2003, Celeste returned to Bartlesville where she was an instructor of music at University of Tulsa, Oklahoma Wesleyan University, private voice teacher to many students and minister of music at Bartlesville First Church. She was a longtime member of the Bartlesville Choral Society board and also performed as soloist with the Bartlesville Symphony, the Bartlesville Choral Society, OK Mozart and the Light Opera of Oklahoma in Tulsa.

Donald L. Cone

1938 - 2020

Contributor and Volunteer of OKM



Donald L. Cone, 82, passed away on Sunday, Aug. 23, 2020, at Ascension St. John Medical Center in Tulsa, Oklahoma.

Donald L. Cone was born July 12, 1938, in Enid, Oklahoma. Don graduated from Enid High School in 1956 and from Oklahoma State University in 1961. Don began his career with Phillips Petroleum Company in 1961, and after 38 years retired in 1999 from the Legal Division as Corporate Assistant Secretary of the Company.

Don and Carol Ann Dehner were married on March 10, 1962, in Enid. They established their home in Bartlesville, joined the Bartlesville First Baptist Church and raised their three children, Todd, Lee Anne and Scott in Bartlesville.

Don volunteered for several organizations - including OKM. Some of his early volunteer activities included the Jaycees and Kiwanis Club. He also volunteered in the Little League baseball program, serving as President of the Federal Little League and later as President of the Bartlesville Little League programs. He was active in the Downtown Kiwanis Club, served on that club's Board of Directors, served as President of the club, and also as the Kiwanis Lieutenant Governor for the district. He regularly volunteered at the Frank Phillips Historic Home mansion and at Woolaroc.

Don was a champion and friend of OKM Music. He volunteered as an usher, working the front gates, driving guest artist's around Bartlesville, and working in the OKM Gift Store. Don always had a smile on his face and greatly loved music. His passion for the arts was evident through his volunteerism.

Veronica Cecelia Martin Cox (Ronnie)

1929 - 2020 *Major contributor of OKM*



Veronica Cecelia Martin Cox (Ronnie) died on May 24, at her home in Bartlesville, surrounded by her family. Ronnie was 90 years old. She was known as a devoted daughter, a kind and generous friend to many, a committed volunteer to many causes in the Bartlesville community, a dedicated member of her church, a caring mother and grandmother, and a loving and supportive partner and companion to her husband of 67 years, Glenn Cox.

Ronnie was born on December 8, 1929, in Tulsa, OK. After a couple of years in town, her parents bought a farm outside of Denver where Ronnie could roam, and she kept a pony, a dog, and rabbits. She was washing her hands on December 7, 1941, the day before her birthday, and when she came out of the washroom, she heard on the radio that Pearl Harbor had been attacked. Ronnie always retained a vivid memory of that moment.

From Colorado, they moved to Boerne, Texas, where her father purchased a ranch. They lived for a while at the Ye Kendall Inn that was built in 1859; it's now a Texas and National landmark and still stands today. Ronnie finished ninth grade in Boerne, mysteriously skipping eighth grade - she was never exactly sure how that happened! After Texas, it was back to Tulsa for a couple of years, where she attended Central High School. Another couple of moves brought her to Kerrville, Texas, during the middle of her junior year. She loved it there, making new friends, learning German dances at outdoor dance pavilions alongside the Guadalupe River, and being elected as the football queen. She graduated from Tivy High School in 1947.

Her next stop was Stephens College, a two-year college for women in Columbia, Missouri. Little did she know that while she was at Stephens, her future husband was just 30 miles away, attending Central College in Fayette, Missouri. Ronnie loved Stephens; she made close friends and was happy to be in the same place for two years after so much moving around. Stephens had 10 ideals that they selected a girl to represent every year. Ronnie was chosen as "Courtesy," which has always seemed fitting to her many friends.

Ronnie still had fond memories of Texas, and that led her to enroll at Southern Methodist University (SMU) for her junior year. Along with three other transfers from Stephens, she lived in a one-room apartment. Ronnie joined the Delta Gamma sorority, and one of her sorority sisters arranged a blind date for Ronnie with Glenn Cox, a fellow transfer student. Ronnie returned for her senior year at SMU and graduated with a BA degree in Sociology with a minor in Psychology. After graduation, Ronnie headed back to Tulsa and got a job at the YWCA as their director of teen programs. Meanwhile, Glenn had joined the Air Force and started pilot training. She continued their on-again, off-again romance from long distance and after much deliberation (to put it mildly), she and Glenn decided to get married as soon as he got his first commission. The commission was issued in December 1952, and Glenn became a 2nd Lieutenant and got his wings. A couple of weeks later, on January 3, 1953, Ronnie and Glenn were married at Trinity Episcopal Church in Tulsa. The young couple had only 16 more moves awaiting them!

In Shreveport, Ronnie realized she was pregnant, and she gave birth to Martin Cox. Glenn rushed back from a flight for the delivery, but Martin came a little early. Glenn made it as far as the hospital lobby, but was turned back by the nurse, an Air Force Major. Ronnie was always a little miffed by that!

Glenn was discharged in 1955 and took a job with Phillips Petroleum Company, and Ronnie and Glenn moved to Bartlesville for the first time in January 1956. They joined the First United Methodist Church. Her second child, Grant, came along in 1956. It was so crowded at Jane Phillips Hospital that she was prepped in the hall. A few more moves were soon in store, as Glenn was transferred to Kansas City, MO; Raleigh, NC; Bartlesville again, Tampa, FL; Columbus, Ohio; and then a final transfer back to Bartlesville for the third time. Ronnie was not a big fan of Columbus, but loved Tampa with its warm weather and some occasional peace and quiet while the boys played outside. And even better, also in Tampa, Ronnie gave birth to Cecelia.

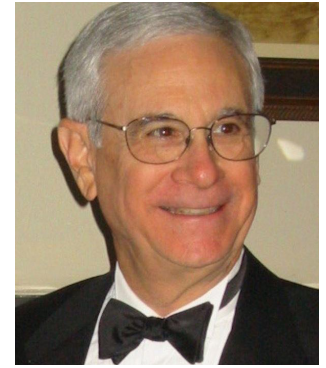
After so much moving around, Ronnie relished the chance to put down roots in Bartlesville, a city she came to love. She enjoyed raising her children and encouraging and supporting their activities. Over the years, she volunteered with Bellringers, Girl Scouts, the Service League, and many other organizations, and helped to organize the Band Boosters. She served on the board of the Price Tower Art Center and on numerous committees at the First United Methodist Church. Ronnie and Glenn were inducted into the Bartlesville Hall of Fame in 2013.

Ronnie attended over 34 years of OKM concerts and was a champion for the arts in Bartlesville.

H.M. "Mike" May 1934 - 2020

Major contributor and former Board Director of OKM

Howard Michael "Mike" May, a pillar of the Bartlesville community for nearly 60 years, passed away in Tulsa on March 31, 2020. He was 85. Born and raised in Bartlesville, he was the 2nd son of Jacob and Helen May. He graduated from the University of Michigan in 1956 with a business degree. He was a member of the Zeta Beta Tau fraternity, where his brothers became lifelong friends. After college, Mike joined the Navy, proudly serving as an officer attached to the Pacific Fleet.



On a leave from naval service, his brother, Jack set him up with Marty Ruvel. It was a match made in heaven. Mike and Marty married and moved to Bartlesville in 1960, where they raised their family and lived together for 50 years. Mike joined his father in the family clothing business, May Brothers, where he clothed countless men and boys over the years. May Brothers endured for 99 years before closing it in 2009. Unable to give up his love for his work and customers, Mike opened a custom clothing business, which he operated until his passing.

Deeply devoted to Bartlesville, Mike served on countless boards including ones for Jane Phillips Hospital, Bluestem Foundation, Bartlesville Symphony, YMCA, Boys and Girls Club, OK Mozart, Big Brothers Big Sisters, Rotary, Green Country Senior Living, Bartlesville History Museum, Bartlesville Chamber of Commerce, Bartlesville Community Foundation, Bartlesville Education Promise, and many more. He also led the Menswear Retailers of America and served on the board of the National Retail Federation.

With a ready smile and a booming laugh, Mike was a friend to all he met and a true gentleman. He loved Bartlesville, his family and friends, college football, golf, music, theater, and dessert. After Marty's untimely passing, Mike met and married Sandi Tilkin in 2014. They enjoyed life together to the fullest, traveling, attending cultural events and dinner parties with friends, and being with family. Sandi was a loving and caring companion, and her children Karen, Michael, and Lori and their families welcomed him with open arms. Mike would often say how lucky he was to have had two such extraordinary women in his life.

Mike was the voice and ambassador for OKM for 35 years. His passion for the arts was a light for the Bartlesville community. Mike will be greatly missed.

Margaret Barton Williford 1933 - 2020

Contributor and Supporter of OKM

Margaret Clyde Barton Williford died on Saturday, August 22nd at her home in Bartlesville surrounded by her family with her loving husband holding her hand. The first born of twins, Margaret came into the world on May 24th, 1933 to Clyde and Jenetta Barton in the town of Kermit, Texas where she and her two sisters grew up. The Barton girls were brought up pursuing and achieving a wide variety of interests though Margaret always gravitated towards friendships and desserts...though not necessarily in that order. She had a vibrant, joyous smile which beamed when she was with people but also if she was enjoying a piece of chocolate cake.



Aside from her culinary appetites, Margaret loved music and began to sing in church and school productions. However, it was when her high school band teacher, Mr. Gilligan, chose her to play the oboe (which she had never done) that she really began to excel. Margaret rose to the level of accomplished musician, playing 1st chair in the orchestra and with world renowned musicians for four summers at the Transylvania Music Festival in Brevard, North Carolina. Though she could have chosen a career as a professional musician, Margaret also had a talent for business and graduated high school as Valedictorian. In the fall of 1951, the Barton girls descended upon the University of Texas where, once again, Margaret would climb the ranks of her class with hard work, talent, and dogged determination. She graduated Summa Cum Laude with a degree in Business Administration in 1955 and landed a job as an executive assistant for the Humble Oil Company, now known as Exxon.

(Margaret Williford's obituary continued on next page)

Margaret Barton Williford **CONTINUED**

John graduated from the University of Texas and the University of Oklahoma Law School and then served in the United States Army at the rank of Captain. After leaving the military, he was hired by the legal department of Phillips Petroleum in Houston, Texas. Given Margaret's frequent indecision with many things in her life, there was a hesitation but that melted away the moment Margaret and John met. In the spring of 1964, on April 4th, John and Margaret were married and, not surprising with Margaret's intrinsic impatience, she gave birth to their son, John Barton, on February 11th, 1965. Though Margaret was still driven by her faith, her heart now focused in one direction towards her son and her husband.

John's tireless work with Phillips moved them from Houston to Bartlesville in 1968, to London in 1981, and back to Bartlesville in 1985. Regardless of the difficulty with John's travel schedule for work and John Barton's precocious but slightly combative nature, Margaret, again, demonstrated a selfless focus of giving and work that only a mother's love could achieve. Still, Margaret managed to always incorporate her need to do for others and cultivate other pursuits. After returning to Bartlesville, she became even more active in the First United Methodist Church while adding parallel philanthropic organizations such as Eldercare and The Journey Home.

Margaret always had a love for photography which became both an outlet and a passion with a fair amount of frustration mixed in. She was a consummate hostess who relished giving dinner parties for friends...which also contained a fair amount of frustration. However, thru the years, all of who she was was fueled by her faith in God and her love for her family. She was a founding member of the First United Methodist Prayer group and it was truly one of the most precious and important experiences of her life. But, as always, her husband and son were the center of her universe. Though she was anxious when John Barton embarked on a career in musical theatre, she never waived in her loving support and attended his productions all over the world. Margaret and John began their love affair the moment they met and were married for 56 years. They laughed every day and held each other till the end as though it was the beginning.

Margaret was an avid volunteer and strong supporter of OKM for 36 years.

Leah M. (Larson) Anderson **1936 - 2020**

Former OKM Receptionist and Volunteer

Leah M. Anderson, a charming, witty, and loving parent, sibling, grandmother, and great grandmother passed on Friday, August 7, 2020. Leah loved dogs, cats, landscape gardening, interior decorating, travel, and bridge.

Leah was born in Cleveland, OH on June 10, 1936 to Audrey and George N. Larson.

When her mother remarried in 1945, she gained a loving stepfather, Bud Bromilow. Leah graduated in 1954 from high school in West Chicago, IL. In May 1982 Leah married Donald E. Anderson of Tulsa. They built a water and gas company, Utility Management of Ochelata. They resided in Ochelata, Monkey Island, and in Bartlesville. Don passed in January 2010. Leah then moved to Wann to be close to her daughter, Dianna.

Leah touched many, many lives and left them all shining a little brighter.



*OKM "In Memoriam" obituaries and photos taken from:
Bartlesville Examiner-Enterprise (powered by www.legacy.com)*

In Memoriam OKM Patrons

OKM Music is remembering those patrons who passed away between June 2019 through August 2020. Their passion for community, music and the arts will be forever remembered.

Yvonne P. Barry

May 2, 1930 - March 13, 2020

Albert E. Basinger, Jr.

November 5, 1931 - May 8, 2020

Ann Basinger

August 30, 1939 - August 1, 2020

Allan Jack Bunge

November 24, 1937 - November 26, 2019

Robert E. "Bob" Case

July 9, 1934 - May 22, 2019

Holly Beth Fouts

September 30, 1969 - June 15, 2019

Jill Fasulo Heinrich

April 7, 1964 - July 16, 2019

Sybil Barbara (Tooke) Hoffman

May 2, 1937 - September 5, 2019

Richard "Dick" Lanckriet

April 7, 1940 - September 22, 2019

Velma Lee Laws-Kaiser

June 15, 1931 - August 28, 2019

Josh Edwin Lee

July 24, 1936 - June 11, 2020

William "Bill" E. Lee

July 10, 1943 - November 7, 2019

Larry Dean Miller

October 8, 1946 - March 27, 2020

Dottie Millis

December 22, 1939 - December 6, 2019

George Anthony Moczygemba

January 7, 1939 - June 7, 2020

Elaine Moore

December 29, 1955 - June 17, 2020

Michael B. Proctor

November 7, 1951 - March 20, 2020

Bailey Rascoe, Jr.

December 14, 1926 - March 2, 2020

Byron Reburn

June 4, 1925 - March 28, 2020

Janice Rogers

May 22, 1939 - April 21, 2020

Janis Sue Sanderson

August 8, 1949 - May 7, 2020

Jimmie Lynn (Wilson) Schmoldt

June 25, 1926 - January 6, 2020

Vernell Seals

February 20, 1930 - April 1, 2020

Dorothy Mae Talley

March 10, 1929 - May 10, 2020

Terrel Lester Taylor

September 6, 1935 - April 29, 2020

Dr. Leonard Kent Thomas

January 25, 1940 - May 6, 2020

Douglas Dean Whistler

August 4, 1941 - March 4, 2020

OKM Music Reformats its 36th Annual Festival Due to COVID-19

Press Release

BARTLESVILLE, Okla. (July 23, 2020) - OKM Music has been gearing up for its 36th season as Oklahoma's premier music festival. However, due to the ongoing COVID-19 pandemic, OKM's Board of Directors have decided to reformat the 2020 festival to ensure everyone's safety and enjoyment while attending the concerts.

Due to restrictions on indoor seating and the need for physical distancing, OKM will not be hosting any indoor concerts or its paid outdoor concerts that would potentially be moved indoors due to inclement weather. All showcase concerts have been postponed to 2021. Main stage performances: Canadian Brass, Jack Settle, Dallas Brass, Tina Guo, Grady Nichols, and Wynona Wang have been postponed to the 37th OKM Festival, June 2021. Verona Quartet has been postponed as a future performance and the University of Oklahoma Symphony performance scheduled for October 4, has been cancelled for 2020 with hopes of rescheduling in 2021.

"We are fully committed to the health and safety of our patrons, artists, staff and community. By following recommendations from federal, state, and local health authorities, reformatting our festival seemed like the most appropriate option. In this difficult time of uncertainty, the OKM Board of Directors believe now more than ever, that the show must go on," says Mary Lynn Mihm, Chairman of the Board.

In order to move forward with a "six-feet away and distanced" approach to its 36th festival, OKM will be presenting various live-streamed concerts for viewers to watch from the comfort of their home, as well as one outdoor concert, scheduled at the newly built Tower Center at Unity Square.

Cellist Tina Guo will be performing a free live-stream concert on Facebook, as well as YouTube on Saturday, September 5 at 2pm. This online performance will feature music from video game, movie and television soundtracks, such as Kung Fu Panda, Game of Thrones, Wonder Woman, to name a few. OKM will soon be announcing several more artists that will be performing online as a way to bring exposure to artists who have been impacted by the pandemic.

"On social media, Tina Guo has well over 600,000 followers. Her performance for OKM is going to be a really exciting way of exposing her music and OKM's mission globally," says Ryan Martin, OKM's Marketing Director.

On Sunday, September 6 at 2pm (CST), Dallas String Quartet will also be performing a free live-stream concert on

Facebook, as well as on their YouTube platform. Encompassing contemporary songs by artist's such as Queen, Bon Jovi, and Sting, popular music will get fused with a "classical" feel.

The outdoor performance originally scheduled for September 10, 2020, featuring Clark Gibson and Balsam Range will go on as planned at the newly built Tower Center Unity Square. The concert will begin at 6pm and is free to the public for general seating. Reserved VIP seats are available for \$15. In the event of inclement weather, the performances will be moved indoors at the Bartlesville Community Center. All VIP ticket holders and the first 325 registered general admission attendees will be permitted to attend the concert if moved indoors. Both free general admission and VIP need to pre-register for the concert at okmmusic.org.

"In compliance of ongoing physical distancing efforts, OKM takes the safety of its guests very seriously. At our September 10 performance, hand-sanitizing stations will be available, seating will be spread out for physical distancing, masks will be encouraged, and temperatures will be taken for guests attending. Other measures may be implemented as they become necessary and available to ensure everyone's enjoyment and safety," said Mihm.

Scheduled for October 4, 2020, OKM's Festival Postlude: Beethoven and the Future of Music, has been cancelled. The University of Oklahoma Symphony is currently not able to perform under current University policy and guidelines due to the coronavirus.

"We hope to present the OU Symphony in the near future when the students are able to perform. We wish the students all the best during these difficult times and hope they are able to pursue their passion for music in other ways this semester," said Mihm.

Current ticket holders have three options regarding tickets already purchased: refund, transfer or donate. Purchasers may donate the value of the ticket purchased as a charitable donation to OKM. A full refund, including all services and handling fees for tickets purchased for the 2020 OKM Music Festival may be issued upon request. Purchasers may also transfer any ticket purchased for an artist whose performance has been postponed until 2021. Ticket purchasers will have until October 1, 2020 to make a decision. After October 1, 2020, all outstanding tickets will automatically be considered a donation. Please call the OKM Box Office (918) 336-9900 or email hello@okmmusic.org for more information.

Reformatted 2020 OKM Festival Schedule



Tina Guo

Saturday, September 5

2:00 p.m. (CST)

Free to view

Live Stream Performance
(see below on how to live stream)



Dallas String Quartet

Sunday, September 6

2:00 p.m. (CST)

Free to view

Live Stream Performance
(see below on how to live stream)



Clark Gibson Quintet

Thursday, September 10

6:00 p.m. (CST)

Free; \$15 VIP Donation

Tower Center at Unity Square
Downtown Bartlesville



Balsam Range

Thursday, September 10

6:00 p.m. (CST)

Free; \$15 VIP Donation

Tower Center at Unity Square
Downtown Bartlesville

How to Live Stream Performances

Each online performance is free to view; link for donations to OKM and performers will be available.

YouTube (www.youtube.com)

- 1 Open the YouTube app on the device you want to watch the performance from or visit youtube.com.
- 2 For September 5 performance, search TINA GUO and click on her profile.
- 3 For September 6 performance, search for DALLAS STRING QUARTET and click on their profile.
- 4 At the time of the event, look for a video with a "live now" and click it to open the video.
- 5 You should be able to watch the concert. It's that easy! After the performance, the concert will automatically be saved on each performers profile for you to view later.

Facebook (www.facebook.com)*

- 1 Open the Facebook app on the device you want to watch the performance from or visit facebook.com.
- 2 Search OK MOZART and click on our profile.
- 3 At the time of the event, look for a live box and click it to open the video.
- 4 You should be able to watch the concert. It's that easy! After the performance, the concert will automatically be saved on OKM's Timeline for you to view later.

**You have to have a Facebook account in order to watch performance through Facebook's platform*

Please make a difference for these artist's and OKM Music by making a donation during the online performances. Be a star!



Live Stream Performance

Tina Guo cello

Tina Guo Live Stream Program

Cello Suite No. 1
Johann Sebastian Bach

Kung Fu Panda
Hans Zimmer, John Powell

Chrono Trigger
Nobuo Uematsu, Yasunori Mitsuda

Game of Thrones Main Theme
Ramin Djawadi

Skyrim
Jeremy Soule

Sakura
Deryn & Dan Cullen

Final Fantasy VII
Nobuo Uematsu

Sweet Dreams
Annie Lennox, David A Stewart

Wonder Woman
Rupert Gregson-Williams

SATURDAY, SEPTEMBER 5 • 2PM

**LIVE STREAM ONLINE PERFORMANCE:
OKM FACEBOOK (OK MOZART)**

*Presented by: Paul & Ivery Anderson, Julie & Charlie Daniels
Mihm-Howk Family, E.L. & Thelma Gaylord Foundation,
Joe & Mary O'Toole, and Ernst & Young (EY)*

Tina Guo

Internationally acclaimed, GRAMMY Award-nominated and BRIT Female Artist of the Year-nominated musician Tina Guo has established an international career as a virtuoso acoustic/electric cellist, multi-instrumentalist, composer, and entrepreneur. Known for her unique genre-crossing style, she is one of the most recorded Solo Cellists of all time and can be heard on hundreds of Blockbuster Film, Television, and Game Soundtracks.

In 2018, Tina signed as an official brand partner with Bentley Motors, composing, performing, and producing original soundtrack for the new Bentayga Hybrid. In 2019, Tina began her exclusive partnership with the Ritz-Carlton and is creating custom soundtracks inspired by their destinations — New Orleans, Dove Mountain, Toronto and Maui will be released in Spring 2020.

The Tina Guo Sample Libraries by Cinesamples is one of the most popular cello solo libraries available on the market today: Volumes 1 and 2 are available now. Tina also introduced a line of Fine Acoustic Cellos, Carbon Fiber Cello Cases, Cello Pick-Ups, and Bows for Violin, Viola, and Cello known for their customized bow material and selection of hair colors for a truly bespoke musical instrument.

Tina is passionate about financial planning and also offers career consultation sessions for musicians and creatives covering everything from sustainable career growth to branding, wealth building, bookkeeping, stage presence, performance, studio etiquette, time management, and DIY in today's music business climate.

As a classical soloist, Tina's engagements with orchestras around the world include the San Diego Symphony, the State of Mexico National Symphony, the Thessaloniki State Symphony in Greece, the Petrobras Symphony in Brazil, and the Vancouver Island Symphony in British Columbia. She collaborated with violinist Midori Goto in Dvorak's American String Quartet at Walt Disney Concert Hall in Los Angeles, and completed four national tours of Mexico and Italy performing the Shostakovich, Dvořák, Haydn, and Saint-Saëns Cello Concertos.

Tina completed an acoustic tour and two sold-out performances at Carnegie Hall with Blues Legend Joe Bonamassa and the live album from the Carnegie Hall concert reached #1 on the Blues Billboard Charts. 2016-Present, Tina tours as a featured soloist with Hans Zimmer Live.

Tina was featured in commercials for Mazda and United Airlines, and a soloist in Cirque Du Soleil's Michael Jackson "The Immortal" World Tour from 2011-2013 performing in sold out arenas around the world. The tour performed to over 3.7 million people and is one of the highest grossing tours of all time. Tina is featured on the Epic Records release "Immortal," replacing the original guitar solo in "Beat It" with an Electric Cello/Guitar Battle-style duet with guitarist Greg Howe. She performed with Skrillex, Dplo, and Justin Bieber at the 2016 Grammy Awards.

Tina performed alongside Hans Zimmer at the Premiere of Inception, and at a concert celebrating Kung Fu Panda 2 for Dreamworks. She was a featured performer at the League of Legends World Championship at a sold-out Staples Center in Los Angeles and an audience of 33 million streaming online. Tina was featured on the Electric Cello with The Crystal Method, Wes Borland (Limp Bizkit), Danny Lohner (NIN), Joe Letz (Combichrist), and the Hollywood Scoring Orchestra. She has also been a featured performer at Comic Con, Blizzcon, and with Video Games Live. Tina toured Europe with Guitar Virtuoso Al Di Meola, who is also one of the featured guests on her album "Cello Metal." In 2019, Tina performed on the Main Stage of Wacken, the world's largest metal festival, with Sabaton and Beyond the Black.

Tina has been featured as a soloist on the scores of Cyberpunk 2077, Wonder Woman, Dunkirk, Sherlock Holmes, The Lion King (2019), Inception, Iron Man 2, Batman vs Superman, Pirates of the Caribbean 5, Boss Baby, The Monkey King 2, Clash of the Titans, Red Riding Hood, X-Men: Dark Phoenix, Olympus Has Fallen, Escape Plan, CSI:NY, Vikings, The Borgias, Sleepy Hollow, Dominion, Iron Chef, My Little Pony: Friendship is Magic (as Octavia,) League of Legends, Blizzard's Diablo III and Hearthstone, Call of Duty: Black Ops II, III, and IV, Lego Marvel Super Heroes 2, Shadow of the Beast, Assassin's Creed Syndicate, Extinction, Revelation Online by Chinese game giant Netease, and Journey, which was nominated for a Grammy for Best Score Soundtrack.

"When she grabs the Cello, it's like a sword. She becomes the Wonder Woman"

Hans Zimmer (Batman v. Superman)

"She may not have grown up on Themyscira, but we're pretty sure Tina Guo has the soul of an Amazon."

DC Comics

"Tina Guo represents the new wave of classical artists finding younger audiences via soundtracks and video games and is nominated for Female Artist Of The Year. Last year, she released an album of video game music – 'Game On!' - establishing her as the pre-eminent force in a growing genre."

Music-News.com

"The notion of melding classical music with heavy metal is far from an alien one. That being said, it's rare to see classical being given a heavy metal makeover in quite so emphatic a fashion as with the work of Tina Guo (...) an international sensation."

Metal Hammer Magazine UK

"Saying that Tina is a talented musician is an understatement... utterly speechless and amazed. A musical prodigy."

All Access Magazine

"Billy Corgan assumed the role of guitar player on most of the songs on Nobody's Daughter and penned the main riff for Samantha. However for the final recording, Love replaced Corgan's guitar with cello. Courtney Love told RS magazine: 'The cello that you hear is a really hot Chinese girl with an amazing rack and insanely good hair who is a heavy metal goddess on cello, Tina Guo.'"

Rolling Stone (Italy)

Tina Guo Bio (continued)

Tina has also recorded for the soundtracks of Kung Fu Panda 3, Hancock, Battle: Los Angeles, The Hangover Part II, Predators, Fast Five, Arthur, No Strings Attached, Beginners, Public Enemies, Rango, The Rite, X-Men: First Class, Your Highness, Yogi Bear, The Mentalist, Family Guy, American Dad, The Cleveland Show, King of the Hill, commercials for Apple iPhone, Under Armour, and many others.

Tina contributed Electric Cello to the creation of elements that were used to create the sound of the Kaijus in Pacific Rim. Her arrangement and performance of “The Flight of the Bumble-Bee” was featured in the end credits for The Heartbreak Kid. Tina composed music for the feature film Persecuted and has many compositions licensed into TV and Film projects.

Tina was featured on The Ellen DeGeneres Show playing “Beat It” and also performed at the American Country Music Awards and American Music Awards with Carrie Underwood, on Dancing with the Stars with Carlos Santana and India Arie, Jimmy Kimmel Live with Ellie Goulding, the Lopez Show with Far East Movement, the Grammy Awards with the Foo Fighters, at the MTV Movie Awards, on American Idol, with the Battlestar Galactica Orchestra, and with Brazilian guitarist Victor Biglione in a Jimi Hendrix Tribute Concert at the Copacabana Palace in Rio de Janeiro. She has performed at the Sundance Film Festival, the Playboy Mansion, and has shared the stage with Adele, Pharrell, Alicia Keys, Steven Tyler, Katie Perry, The Tenors, Stevie Wonder, Peter Gabriel, Josh Groban, John Legend, LeAnn Rhimes, Chris Isaak, Il Divo, Ariana Grande, Lupe Fiasco, Common, Jennifer Hudson, and Michael McDonald. Corporate clients have included Bentley Motors, Cartier, The Ritz-Carlton, AMC, Microsoft, Apple, Cephalon Biopharmaceutics, Adecco, KPMG, Nuskin, and the PGA. Tina was a featured performer at the Cartier High Jewelry Gala in New York City, and has recorded on hundreds of albums, with artists such as John Legend, Ciara, 3 Doors Down, Jordan Smith, David Archuleta, and Big K.R.I.T.

Tina’s musical education began at the age of 3, when she began her piano studies in Shanghai, China. After coming to America at the age of 5, she began violin lessons with her mother and later began studying the cello under the instruction of her father, Lu-Yan Guo at the age of 7. Tina continued her professional cello studies with Eleonore Schoenfeld at the University of Southern California’s Thornton School of Music on full scholarship, and was also a Governor’s Scholar for academic excellence.

Tina’s Music Video for “Queen Bee” won Best Short Film/Music Video at the Downtown Los Angeles Film Festival. Her songs “Queen Bee” and “Forbidden City” are also available for download to play for Rockband on Xbox 360 and PlayStation. Metal Hammer Magazine UK described Tina as “an international sensation” and she was also featured in Glamour Magazine Russia and Official Playstation Magazine. Tina was the 2014 Innovation Award Recipient from the Asian Heritage Awards, named “Instrumentalist of the Year” at the 2015 Los Angeles Music Awards, and won in the New Age Category at the 2016 Hollywood Music in Media Awards. She was nominated for Best New Age Album at the 2017 Grammy Awards, and Female Artist of the Year at the 2018 Classic BRIT Awards.

Tina has provided music as a Composer and Producer for Bentley, the Ritz-Carlton, Mercedes, Call of Duty: Ghosts MTX 4, the Official Launch Trailer for video game ArchAge “A Way Home,” and the Official Trailer for feature film “The Best Offer.” Her music can be heard on WWE Smackdown, WWE Monday Night Raw, NHL Rivals, Chopped, Mission October on Fox Sports, Inside the PGA Tour, Road to Ferrari, and Against the Odds on the American Heroes Channel. In 2015, she released a Charity album with 13 film/tv/media composers: “Tina Guo & Composers for Charity.” 100% of the proceeds from the album go directly to Mr. Holland’s Opus Foundation in support of music education.

In 2016, Tina signed an exclusive recording contract with Sony Music after self releasing 9 albums through her own label, and her debut Sony album “GAME ON!” was released in 2017. She is currently working on her second Sony album for 2020. Tina performs on her Gand & Bernadel Cello made in Paris, France in 1880. On electric cello, she plays a customized Yamaha SVC-210 as a Yamaha Performing Artist. Tina also plays an Erhu made in Shanghai, China.

Tina endorses Yamaha, Line 6, Output, Sennheiser, Samson, and Analysis Plus Cables.

visit: tinaguo.com



QUEST REALTY
Your Home Finder



Beryl Scott Kasie Hixon Connie Bottenfield
918-214-4500 918-214-2828 918-766-1528

111 NE Washington Blvd.-Bartlesville, OK

NDARY MUSICIANS RECORDING STUDIO
OMA MUSIC TRAIL STUNNING VE
S OKLAHOMA
STUDIOS YOUR FILM AND MUSIC RESOURCE
VE RECORDING STU
NDARY MUSIC
OKLAHOM
INN
Y MU
ENU
AS
CENTI
MU
USICI
RY N
OKLAHO
RECORDING S
UNFOR
TABLE EVEN



CALL 800.766.FILM | VISIT OKFilmMusic.org

#OkieFilm #OkieMusic




JT PAINT & DESIGN

Professional Painting Service

Green Country's Trusted Painting Company

Residential and Commercial

NO JOB TOO SMALL OR TOO LARGE

JTPAINTandDESIGN.com

918-766-2399



Live Stream Performance Dallas String Quartet

SUNDAY, SEPTEMBER 6 • 2PM

LIVE STREAM ONLINE PERFORMANCE: OKM FACEBOOK (OK MOZART)

Presented by: Accenture, Margaret Boesiger, Charlie & Coralea Bowerman, Mark & Debbie Haskell, John Mihm, H.A. & Mary K. Chapman Charitable Trust, and Tate Boys Tire & Service

Where Bach Meets Bon Jovi Program

Everything from Bach to Bon Jovi, enjoy an online performance where classical and contemporary music get fused in this electrifying performance by Dallas String Quartet.

Dallas String Quartet

A fusion of classical and contemporary music on both traditional and electric strings. With the 2016 release of their fourth album “DSQ” they continue to expand their passionate following on Pandora, Spotify, and Sirius XM radio. DSQ performs intimately as a quartet or with a full accompaniment of drums, guitar, and piano.

In addition to performing internationally, DSQ has played “at home” for Presidents Obama and Bush, the College Football Playoff, NBA, and NFL organizations. DSQ has sold out concert venues like the House of Blues and symphony halls alike. They have played alongside Josh Groban, Chicago, and the Trans-Siberian Orchestra.

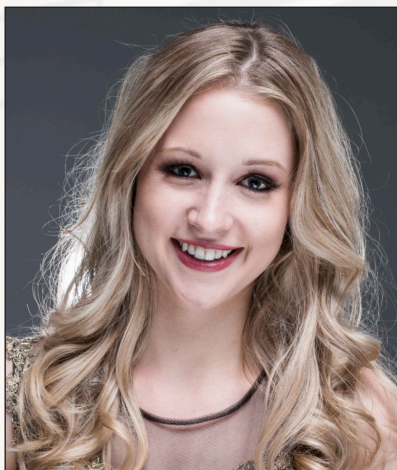
visit: dallasstringquartet.com

Dallas String Quartet Ensemble Bios



ION ZANCA COMPOSER & VIOLIST

Ion Zanca has earned a reputation nationwide as a prolific performer, composer, and producer. His talents as a versatile violist have been celebrated on the classical stage as well as on the jazz and contemporary music scene. Having performed for two sitting presidents, the NFL, and the NBA, he has also appeared on numerous national media outlets such as ESPN, NBC, and CW 33. He is a voting member of the Recording Academy, better known for its annual Grammy Awards, and is the artistic visionary behind the DSQ Electric ensemble. He holds a graduate degree in Music Performance from Southern Methodist University. A native of Romania, Ion hails from a long lineage of musicians. He currently resides in Dallas with his wife, Estera, and his son Julian.



MELISSA PRILLER VIOLINIST

Melissa Priller is a professional violinist experienced in many playing styles with a passion for performing and a virtuosic flare that electrifies stages across the country. Playing classical and electric violin, Melissa has recorded a number of albums and singles with various professional artists, in addition to being featured in various music videos and film works. Classically trained, Melissa began her violin studies in Chicago, Illinois, where she played in an elite youth violin ensemble, gaining international touring experience and playing for the likes of Pope Benedict XVI in Rome and Prince William Lobkowitz in Prague. At the same time, Melissa began a career in modeling, walking runway for numerous fashion shows and landing features in various print ads. Melissa attended Southern Methodist University on scholarship. She earned her Bachelor of Music in Violin Performance and a Minor in Arts Entrepreneurship in 2016. Melissa has performed for Presidents, NBA and NFL teams, opened for artists such as Kenny G, and soloed with the Irving Symphony. She currently lives in Dallas, Texas, where she maintains an active teaching studio in addition to performing.



ELEANOR DUNBAR VIOLINIST

Violinist Eleanor Dunbar is an accomplished and commanding artist, performing regularly as a soloist, chamber music enthusiast, and concertmaster. A graduate of Southern Methodist University, she earned her Bachelor's of Music degree in Violin Performance under the direction of Emanuel Borok. During her education at SMU, she was awarded the prestigious Presser Undergraduate Scholar Award, given to an outstanding music major each year. A native of California, Eleanor began her musical education at the young age of three. Under the tutelage of violinist Gail Gerding Mellert, she began her performance career throughout California, entered and placed in many competitions, and appeared as a soloist with symphonies such as the Hollywood Bowl Orchestra. From a young age, she attended music Festivals such as the Aspen Music Festival and the New York String Orchestra Seminar. At the age of sixteen, she began her undergraduate studies at Southern Methodist University. Eleanor has been honored to share the stage with incredible artists such as Roberto and Andrés Díaz, the Escher Quartet, Chee-Yun Kim, Alessio Bax, and many more. She continues to perform throughout the country presenting recitals and performing with esteemed orchestras. Eleanor plays on a violin made in 1896 by Joseph Anthony Chantot in London, England.

Dallas String Quartet Ensemble Bios (continued)



YOUNG HEO BASS

Young Heo is a professional jazz bassist based in Dallas, Texas. Young had the opportunity to play in a professional setting with Ellis Marsalis, Adonis Rose, Delfaeyo Marsalis, Stefan Karlsson, and Bernard Wright, and recorded over twenty albums including One O'clock Lab Band 2013. Originally from Seoul, South Korea, Young Heo moved to United States when he was 16 years old. Young attended University of Texas at Arlington in 2007 and started playing intensively with the UTA Jazz Orchestra and top jazz combo. By the time he finished his bachelor degree in 2010, he had received multiple jazz scholarships and awards including Bill Snodgrass Endowed Jazz Scholarship Award. In 2011, Young was accepted on scholarship into the graduate jazz program at the University of North Texas. At the North Texas, Young performed with school's top ensembles including the Two O'clock Lab Band and the Grammy-nominated One O'clock Lab Band. While in the band, he had opportunities to play with such players as Peter Erskine, Bob Moses, Mike Stern, and many other jazz artists around the world. Young was awarded by UNT music faculty as the Outstanding Graduate Jazz Studies Student for 2013. Since the graduation from UNT, Young has been very busy with performing and teaching in Dallas. Currently he teaches at Collin College, Tarrant County Community College, Greater Dallas Youth Orchestra, and Southwestern Baptist Seminary.



ANTHONY PLANT GUITARIST

Anthony Plant has been playing in the rich music scene of Dallas/Ft Worth since his early teens. His guitar playing has given him the opportunity to play with many legends, such as Michael W Smith, Antonio Sanchez (Pat Metheny Group), Randy Brecker, Ronnie Laws, the Temptations, Bucky Pizzarelli, and Snarky Puppy to name a few. He studied guitar on scholarship at the University of North Texas with Fred Hamilton and Joe Lee, and in Dallas, TX with the masterful Jason Bucklin. Equally at home playing Brazilian bossa nova on classical nylon guitar, playing bebop lines in a straight-ahead acoustic jazz setting on his archtop, or playing soaring leads on electric guitar, he is in high demand in the DFW studio scene and has recorded on well over 100 albums. His own solo album, *The Colour out of Space*, was released in 2012 with his original compositions and arrangements. He keeps a busy schedule playing locally in DFW, touring nationally with the Dallas Strings Quartet, recording in studio sessions, teaching a select group of students, and he is the Musical Director at St John Catholic Church. When he doesn't have a guitar in his hands, you might find him playing soccer or walking the Camino de Santiago in Spain.



EFREN GUZMAN JR. PERCUSSIONIST

Efren Guzman Jr. ("Chiquis") stands out among his peers for his amazing flexibility and impeccable rhythm. He is equally gifted in all musical styles: classical, pops, Broadway, Latin, Jazz, Big Band, studio recordings, etc. His finesse, elegance and command of all kinds of percussion instruments, make him truly unique in the world of music. A complete musician, his piano and composition gifts are added attributes to an already stellar career. Efren was born in Mexico City. He attended the National Conservatory of Music and began his early studies as a drummer with his father. He came to the USA as a scholarship student of Paul Guerrero (Stan Kenton's drummer) and later studied at the University of North Texas, where he distinguished himself as a drummer and percussionist under the tutelage of Prof. Ed Soph, Dr. Robert Schietroma, Mike Drake and Colaiuta, Peter Erskine, Dennis Chambers, Jack Dejonette, Alex Acuna, Tito Puente, Don Famularo, Luis Conte and Giovanni Hidalgo. He toured the USA and Canada as a member of the Grammy nominated "One O'Clock Jazz Band" in 1991. He has recorded with artists such as Armando Manzanero, Placido Domingo, Arturo Castro, Emmanuel and Mexican superstar Alejandro Fernandez with whom he recorded his latest DVD. He was the drummer of Mexican pop artist Reyli Barba and performed for the "Latin American Grammy Awards" in Las Vegas, November, 2011. He has also toured Europe and Japan as a drummer with the internationally known Perez Prado Mambo Orchestra. Personal projects include a Jazz CD and DVD recording with guitarist Alvaro Torres and continues to be active in Jazz Festivals in Mexico and the USA.

YOUR BUSINESS IN THE SPOTLIGHT

DIGITAL ADVERTISING



WHAT A BRIGHT IDEA!

5 STAR MEDIA GROUP

"BARTLESVILLE'S DIGITAL BILLBOARD"

HWY 75 & ADAMS RD

918-214-2828

BartlesvillesDigitalBillboard@gmail.com

CLASSICAL RADIO

KUCO 90.1
KBCW 91.9 McAlester
KCSC 95.9 Woodward

kucofm.com

A community-supported outreach of the University of Central Oklahoma

EY

Building a better
working world

Take a bow for adding a bit of spice to the everyday.

Culture nurtures the spirit and the community. At EY, we applaud OKM Music, because we believe the arts are not an afterthought. They are the foundation for a richer life.

Visit ey.com

© 2019 Ernst & Young LLP. All Rights Reserved. CSG No. 1904-3115816 | ED None.



Festival Finale Performance

The Clark Gibson Quintet

and Balsam Range

THURSDAY, SEPTEMBER 10 • GATES OPEN AT 5PM
TOWER CENTER AT UNITY SQUARE

Presented by: Bartlesville Convention & Visitors Bureau, Conoco Phillips, DSR, Mary Lynn Mihm, Attorney at Law, Phillips 66, and Truity Credit Union



Tower Center at Unity Square

Clark Gibson is a jazz saxophonist, composer and educator. Gibson currently is the Director of Jazz Studies and Assistant Professor of Saxophone at Northeastern State University. He is a highly sought after adjudicator and clinician throughout the country. His forward-thinking music is strongly rooted in the traditions of jazz musicians of the 20th century, the history of Western classical music, his own life experiences, as well as musical traditions from cultures across the globe.

Over the past 20 years, Clark has worked with the Tommy Dorsey Orchestra, the Temptations, the Four Tops, Tito Puente Jr., The Jim Knapp Orchestra, Pat Bianchi, Doc Severinson, Lalo Rodriguez, the Seattle Latin-All Stars, Tombau, Dina Martin, Clarence Acox, Greta Matassa, Jay Thomas and many others. In 2014 Gibson released, "Charlie Parker with Strings: The Lost Arrangements", receiving outstanding reviews from publications such as Down Beat Magazine, Jazz Weekly, Allaboutjazz.com, Oklahoma Magazine, Jazz Wax, Los Angeles Jazz Scene and more. This project has led to a new facet in his performance and recording career as he combines ensembles that have instrumentation from the jazz as well as orchestra tradition.

This project has led to a new facet in his performance and recording career as he combines ensembles that have instrumentation from the jazz as well as orchestra tradition.

His latest project is the Clark Gibson Quintet. In September of 2019, Gibson self-released "Tri-Colored Eyes" featuring world renowned B3 organist Pat Bianchi, Jim Pisano on tenor sax, Michael Dease on trombone and Jeremy Thomas on drums. This all original music project has enjoyed national attention and great reviews from Rootsville Jazz, Blues and Roots - Europe,

The Clark Gibson Quintet Members

THURSDAY, SEPTEMBER 10 • PERFORMING AT 6PM



PAT BIANCHI
B3 ORGANIST



MICHAEL DEASE
TROMBONE



CLARK GIBSON
SAXOPHONE



JIM PISANO
TENOR SAX



JEREMY THOMAS
DRUMS

visit: clarkgibson.net



Balsam Range

THURSDAY, SEPTEMBER 10 • PERFORMING AT 7:30PM

Balsam Range is; Buddy Melton (fiddle, lead and tenor vocals), Darren Nicholson (mandolin, octave mandolin, lead vocals, baritone and low tenor vocals), Dr. Marc Pruett (banjo), Tim Surrett (bass, dobro, baritone and lead vocals), and Caleb Smith (guitar, lead & baritone vocals). The five original members are all acoustic musicians and singers from western North Carolina. They thoughtfully and respectfully adopted the name of a majestic range of mountains that surround part of their home county of Haywood, NC where the Great Smoky Mountains meet the Blue Ridge, the Great Balsam Range.

The members of Balsam Range are extremely proud of their home of Haywood County, NC and invite you all to come visit their beautiful part of the country!

The 2018 International Bluegrass Music Association's Entertainer of the Year, Balsam Range, has become one of the genre's most award-winning acts. Since forming in 2007, the group has garnered 13 IBMA awards on the heels of 8 critically-acclaimed albums. Balsam Range has left audiences spellbound while headlining major festivals from coast-to-coast, selling out venues across the nation and in multiple appearances at the Grand Ole Opry. The band collaborated with the Atlanta Pops Orchestra Ensemble to record 2 albums, the second of which, *Mountain Overture*, debuted on the Billboard Bluegrass Chart at #5 and the Classical Crossover Chart at #6. Their previous outing, *Mountain Voodoo*, debuted at #4 on the Billboard Bluegrass Albums Chart and remained on that chart for 45 weeks. Three singles from that album reached #1 on the Bluegrass Today Chart, including "Blue Collar Dreams," which spent three consecutive months at the top. The band most recently claimed the #1 radio chart spot with their single "The Girl Who Invented The Wheel."

In addition to winning Entertainer of the Year, Balsam Range vocalist Buddy Melton won IBMA's Male Vocalist of the Year and bass player Tim Surrett won IBMA's Bass Player of the Year in 2018.

Balsam Range Members



BUDDY MELTON
FIDDLE, LEAD VOCALS
(TENOR)



DAREN NICHOLSON
MANDOLIN, OCTAVE
MANDOLIN,
LEAD VOCALS
(BARITONE, LOW TENOR)



DR. MARC PRUETT
BANJO



TIM SURRETT
BASS, DOBRO,
BARITONE, LEAD
VOCALS (BARITONE)



CALEB SMITH
GUITAR, LEAD VOCALS
(BARITONE)

visit: balsamrange.com

In the event of inclement weather, this performance will move inside to the Bartlesville Community Center. VIP guests and the first 325 general admission guests will be admitted.

Festival Finale Emcee Katie Keleher



The emcee for OKM's free festival finale performance is Katie Keleher.

Katie is a multi-media journalist for KJRH, Tulsa.

Keleher is no stranger to Bartlesville and graduated from Bartlesville High School in 2013. In 2017, Katie graduated from the University of Kansas with a degree in journalism. From there she worked as a MMJ/Weekend Anchor at KIFI/KIDK in Idaho Falls, Idaho for two years.

Katie is very excited to be back in Oklahoma and in her spare time she enjoys hiking, reading and exploring new places.

Follow Katie Keleher on Social Media:

www.facebook.com/KatieKeleherKJRH

www.instagram.com/katiekeleher



www.bartlesvillerradio.com



What do the arts mean to Oklahoma?

- stronger economy
- enriched culture
- improved academics
- revitalized communities
- creative workforce

An agency of state government • arts.ok.gov





Frank Phillips Home by Ragon Steele, 2020



Ragon Steele and OKM Chairman of the Board Mary Lynn Mihm, 2019

OKM Music's 2020 artist is Ragon Steele.

In 1972, Steele, a Bartlesville native, graduated from Southwest Missouri State University in Springfield, Mo., with a bachelor's degree in art. He started his art career while in college at Missouri State, sharing his art career with a wrestling scholarship and the wrestling program. Art was on the back-burner, he says, until he accepted a teaching and coaching position at Oklahoma Union Schools. It was at that time that he started trying to present art elements and principles in an organized way.

"The reason this is important is that this analysis of art resulted in a personal analysis of how to draw, paint, and do sculpture," says Steele.

This personal analysis led to his affiliation with the Bartlesville Art Association. Steele brought drawings and paintings to B.A.A. events and saw his deficiencies in the areas of drawing and painting.

"This resulted in self analysis and a renewed discipline to improve in the techniques needed to produce good art," says Steele.

Steele is now an active member in the B.A.A., where he conducts a summer art camp every year for children. He teaches basic drawing and watercolor painting classes at Tri-County Technology Center, as well as private art lessons at his home.

Artists that influenced Steele in his path to success have been Leonardo da Vinci, Michelangelo, Steven Graham, Dan Krigbaum, Jan Clark, and Rod Bailey.

Steele was honored by the Oklahoma Governors Gallery to be the first artist to display art at the state Capital Gallery for the 100-year anniversary of the state.

In 2019, OKM Chairman of the Board Mary Lynn Mihm was so impressed by Ragon's artwork that she proposed Steele to create a commemorative piece for the 35th OKM festival. An original painting of Frank Phillip's Price Tower and the Bartlesville skyline was placed inside the shape of a violin for OKM's festival. Steele beautifully recreated this painting on a physical violin and presented the instrument to OKM.

For OKM's 2020 festival, Steele was asked again to create an original painting reflecting the Frank Phillips Home. This commemorative work was later placed inside a grand piano to showcase the 36th annual OKM festival.



LaQuinta Mansion, Ragon Steele



Old Washington County Courthouse, Ragon Steele



Bartlesville Community Center, Ragon Steele

OKM's "Especially for Kids" Held July 13-18 Hit All The Right Notes

Especially for Kids Press Release

BARTLESVILLE, Okla. (August 13, 2020) -

Promoting youth music education drives the OKM Music mission, and the children's music festival held July 13-18 delivered a variety of events for all ages.

"OKM Music offered seven days of children's activities including musical story time, magic and ventriloquy, music-themed art projects, a Disney Song Box bingo, adventures with the violin, two piano sessions, and a wonderful Princess Tea," said Rose Hammerschmidt, OKM's Director of Children's Programming.

Most of the children's activities took place at OKM Music's Ambler Hall. While children attended in small groups throughout the day, children were also able to attend online via live streaming. For those attending, temperatures were taken, children were provided masks, hand sanitizer, and were socially distanced from each other for everyone's safety.

During the week of July 13-18, over 2,570 attended either in-person or by viewing online through OKM's social media platforms. Interested families can visit the OKM Music website: okmmusic.org/childreensevents where they can view the listed live streamed events and participate at home.

- Violin Adventures with Adam Lodrigueza
- "Secrets of the Vegetable Garden" and "Once Upon a Timely" with Moriah Ross
- "Melody's Mostly Musical Day" with Pianist Jenny Lin
- Storytime and Piano with Ms. Foote
- "Dan the Taxi Man" with Moriah Ross
- Magic with Jim Green

"The week was amazing, and the children really had a great time," says Hammerschmidt.

Many friends who normally attend the annual children's events were unable to attend this year's festivities due to Covid-19. Since school resumed, OKM Music has partnered with a couple of these organizations: the Westside Community Center and First Friends at First Presbyterian Church to allow children the opportunity to watch the "Especially for Kids" live-streamed events. OKM Music delivered over 40 craft bags to both organizations for these youth to participate. The use of live stream technology has really opened the world to so many possibilities.

Based in Bartlesville, Okla., the 36th Annual OKM Music Festival has reformatted its Festival scheduled for September 4-10. Due to restrictions on indoor seating and the need for physical distancing, OKM will not be hosting any indoor concerts or ticketed outdoor concerts that could potentially be moved indoors due to inclement weather. Festival performances include Tina Guo, live stream concert on Sept.5 at 2:00 p.m., Dallas String Quartet, live stream concert on Sept. 6 at 2:00 p.m., and the free Finale at Tower Center at Unity Square on Sept. 10 at 6:00 p.m. featuring the Clark Gibson Quintet and Balsam Range.

All showcase concerts have been postponed to 2021 due to Covid-19. Main stage performances: Canadian Brass, Jack Settle, Dallas Brass, Tina Guo, Grady Nichols, and Wynona Wang have been postponed to the 37th OKM Festival, June 2021. Verona Quartet has been postponed as a future performance and the University of Oklahoma Symphony performance scheduled for October 4, has been cancelled for 2020 with hopes of rescheduling in 2021.

July 13-18 Especially for Kids Photos

Children's Festival sponsored by: Bartlesville Community Foundation, Jeanalee & Charles Parsons Foundation, Oklahoma Arts Council, REVO Financial - Jon Nettles, and Shelley Koster - Keller Williams Realty



Music Education

The mission of OKM Music is to deliver high quality music and cultural experiences for all ages. OKM Music promotes Oklahoma artists at all levels from early-childhood to adults through enriching music education. At its core, OKM fosters the collaborative and creative spirit of musicians and artists of all genres in an effort to make the arts accessible to all.

At OKM Music, we hope to bridge the music gap and engage children in the arts while increasing awareness of the importance of arts education. OKM Music is dedicated to the arts for our public schools, private schools and home-schooled students.

OKM Music will periodically arrange group Masterclasses with professional artists for students in our community as well as bring opportunities for younger children in Ambler Hall to tactile learning through exposure to various orchestra instruments donated and funded by OKM Music.

Our Masterclass offerings allow students aged 12-18 to meet professional musicians, learning technique and craft in a traditional apprenticeship manner, at no cost to the students. In addition, OKM Music is launching initiatives to bring children ages 4-11 an educational experience interacting with musicians and instruments.

Our goal, like the Masterclass offerings, is to get youth out of the audience and in direct contact with musicians. We also partner with local schools and youth organizations to bring guest artists in for mini concerts and educational Q&A sessions. In addition, OKM collaborates with the Bartlesville Salvation Army.

In 2018, OKM introduced its scholarship program. We offer two \$1,000 merit-based scholarships to local students. This opportunity allows OKM Music to give back to the community that has supported it for over 36 years. We are helping shape the future of the music and arts programs in our community by supporting local students aspiring to careers in music and in the arts.

These two merit based awards, the Thomasane Chapple Memorial Scholarship Fund for rising starts ages 3018 will enhance their access to music instruction outside the classroom, and the Mihm Scholarship Fund for high



Mary Lynn Mihm presenting the 2020 Mihm Scholarship Recipient, Abigail Claussen, a \$1,000 scholarship check.

school seniors will support their goals of higher education in music. For more information on OKM's scholarships, visit: okmmusic.org/scholarships

OKM is also proud of its initiative in bringing music education geared towards special needs children, especially youth with aspergers and autism. In 2021, OKM will be launching its deaf music education initiative: "Sounds of Silence."

Opportunities such as these exist because of generous patrons like you.

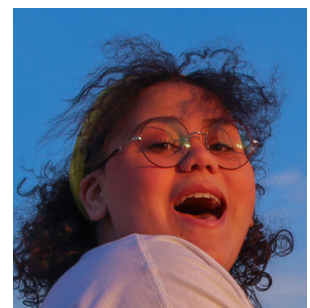
Please consider supporting OKM Music Education programming by making a donation today!

High School Internship Program

OKM Music partners with Bartlesville High School every year for a high school student to experience an internship with OKM. An internship with OKM Music provides the opportunity to experience all aspects of producing an International Music Festival. Interns work hands-on in a fast-paced, creative environment.

OKM Music's intern for 2020 is high school senior, **Victoria Polley**.

Victoria "Vick" Polley looks forward to attending the University of Arkansas to major in Theatre Performance/ Graphic Design. She enjoys listening to Harry Styles, Stevie Nicks, and "all the other greats." When she's not listening to music, Victoria loves volunteering and advocating for human rights.



SHELLEY KOSTER

THE KOSTER TEAM

918-914-3444
SKOSTER@KW.COM
THEKOSTERTEAM.COM



We welcome the opportunity to apply for the job of Your Real Estate Team!

kw BARTLESVILLE
GRAND LAKE
KELLERWILLIAMS. REALTY

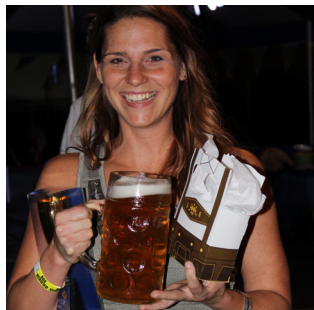
Oktoberfest

October 5, 2019



OKM Music held its ninth annual Oktoberfest on October 5, 2019 outdoors on Dewey Ave. in Downtown Bartlesville. Traditional food flavors, culture and entertainment brought the German festival.

Festival-goers dined on authentic German food as well as hot dogs, cupcakes and tamales. Cocktails, wine and beer added to the European atmosphere.



The German-American Society of Tulsa's Blaskapelle and Mach Schnell livened up the party with polka music, while GAST's folk dancers demonstrated authentic German dancing.

Due to COVID-19, the 2020 Oktoberfest has been postponed. Stay tuned to okmmusic.org for details of the next Oktoberfest, 2021.

Christkindl Market

December 14, 2019



OKM hosted its third Christkindl Market on December 14 at the Bartlesville Community Center Community Hall.

In addition to holiday music, the festival atmosphere included specialty booths selling handmade goods such as candles, bath and skin care products, jewelry, crocheted items, pottery, original artwork, wood-turned ornaments, as well as boutique clothing, Christmas-themed gifts, scentsy products and children's books.



Festive beverages, an assortment of food and children's activities added to the magical experience.

Due to COVID-19, the 2020 Christkindl Market has been postponed. Stay tuned to okmmusic.org for details of the next Christkindl Market, 2021.

History of OKM Music



The OKM Music Festival originally was called the OK Mozart International Festival when it began in 1983, after Nan Buhlinger, Bartlesville musician, arts administrator and community leader, met Ransom Wilson. The Solisti New York Orchestra, led by Wilson, was performing at the Bartlesville Community Center as part of a U.S. tour.

Wilson and Buhlinger thought this would be a great place for a music festival, given the exemplary acoustics at the BCC. After a lot of hard work, their idea came to fruition and the first festival kicked off during a weekend in June 1985. Wilson served as artistic director and Buhlinger was executive director of the music festival. It soon expanded to a 10-day festival, featuring many of the world's finest performers in classical music, among them Joshua Bell, Sarah Chang, James Galway, Itzhak Perlman and Leontyne Price.



Showcase and children's events added cultural and local flavor to the festival for out-of-town guests. Those events continue today.

Solisti served as the orchestra in residence through 2005, until Wilson resigned as artistic director. Because he owned the rights to the Solisti New York name, the musicians continued on at OK Mozart under a new name, Amici New York. By 2016, however, the festival turned a new direction and put the "OK" back into OK Mozart by utilizing the state's own prominent orchestras.

The Bartlesville event held each June was named for the Austrian classical composer Wolfgang Amadeus Mozart. During the years, programs expanded to include everything from classical and contemporary music to bluegrass, gospel and popular music. As the festival continued to evolve and bring on more variety in music genres, the time was ripe for a name change. In 2017, the OK Mozart Music Festival became known as OKM Music, still retaining its early heritage with OKM, but going a step further to include all music.



Images:
Top right: James Galway and Nan Buhlinger; Middle: Sons of Serendip; Bottom right: Lucas Hoge

Previous OKM Artists

1985
—
1998

1985 (short first season)

Nadja Salerno-Sonnenberg, violin // Solisti New York Orchestra // Robin Sutherland, piano // Ransom Wilson, Artistic Director, conductor, flute

1986

Nancy Allen, harp // Peter Bay, conductor // Lucille Beer, mezzo soprano // Robert Briggs, basso // Roy Dotrice, actor, narrator // Nicholas Deutsch, writer, director // Myles Hernandez, choral conductor // Hei-Kyung Hong, soprano // David Jolley, french horn // New York Baroque Dance Company // Elmar Olivera, violin // David Shifrin, clarinet // Solisti New York Orchestra // Robin Sutherland, piano // Diane Walsh, piano // Robert White, tenor // Evan Wilson, painter // Ransom Wilson, Artistic Director, conductor, flute

1987

Stephen Burns, trumpet // Calliope – A Renaissance Band // Nicholas Deutsch, writer, director // Candace Goetz, soprano // Stephen Hanan, actor, narrator // Beverly Hoch, soprano // Roger Nierenberg, conductor // Mark Peskanov, violin // Andrew Porter, writer, translator // Nathaniel Rosen, cello // Samuel Sanders, piano // Solisti New York Orchestra // John Wright Stevens, lighting, costumer // Robin Sutherland, piano // Allan Vogel, oboe // Robert White, tenor // Ransom Wilson, Artistic Director, conductor, flute

1988

Manuel Barrueco, guitar // Mark Citret, architectural photographer // Nicholas Deutsch, writer, director // John Finch, actor, narrator // Jahja Ling, conductor // Paula Robison, flute // Solisti New York Orchestra // Robin Sutherland, piano // Joseph Swenson, violin // Ransom Wilson, Artistic Director, conductor, flute

1989

Ik-Hwan Bae, violin // Chanticleer, mens chorus // Warren Lash, cello // Marvis Martin, soprano // Otto-Werner Mueller, conductor // Paul Neubauer, viola // Mark Peskanov, violin // David Oei, piano // Eriko Sato, violin // David Shifrin, clarinet // Solisti New York Orchestra // Robin Sutherland, piano // Ransom Wilson, Artistic Director, conductor, flute

1990

Stephanie Chase, violin // Catherine Comet, conductor // Roy Dotrice, actor // Free Flight, jazz // Thomas Hill, clarinet // Hei-Kyung Hong, soprano // Jeffrey Kahane, piano // Mihae Lee, piano // Edgar Meyer, double bass // Fenwick Smith, flute // Solisti New York Orchestra // Robin Sutherland, piano // Ronald Thomas, cello // Marcus Thompson, viola // Ransom Wilson, Artistic Director, conductor, flute

1991

Ik-Hwan Bae, violin // Lucille Beer, mezzo soprano // The Canadian Brass // Mariann Cook, soprano // JoAnn Falletta, conductor // Jon Ford, actor, narrator // Jon Ford, actor, narrator // Carl Halvorson, tenor // Nai-Yuan Hu, violin // Warren Lash, cello // Lar Lubovitch Dance Company // Mozarteum Quartet, string quartet // Mozart-on-Fifth, woodwind trio // Paul Neubauer, viola // Carolann Page, soprano // David Pittsinger, basso // Chas Rader-Shieber, writer, director // Jean-Pierre Rampal, flute // Solisti New York Orchestra // Robin Sutherland, piano // Joseph Villa, piano // S. Morris Wise, baritone // Ransom Wilson, Artistic Director, conductor, flute

1992

Joshua Bell, violin // Steven Condy, bass-baritone // Jean-Michel Damase, composer // Free Flight, jazz // Pamela Frank, violin // Lynn Harrell, cello // Pamela Hinchman, soprano // Wendy Hoffman, mezzo soprano // Warren Lash, cello // Paul Neubauer, viola // Andrew Porter, writer, director, translator // Robert Sapolsky, baritone // Peter Schickele, composer, conductor // Richard Schmid, painter // Doc Severinsen, trumpet, and Facets, jazz ensemble // David Shifrin, clarinet // Solisti New York Orchestra // Robin Sutherland, piano // Irma Vallecillo, piano // Allan Vogel, oboe // Ransom Wilson, Artistic Director, conductor

1993

Nancy Allen, harp // Stephen Balderston, cello // Betty Buckley, singer, actress // Cameron Grant, piano // Warren Lash, cello // Leonardo Trio // Kerry McDermott, violin // Paul Neubauer, viola // Christopher O'Riley, piano // Itzhak Perlman, violin // Stewart Robertson, conductor // Richard Schmid, painter // Joseph Silverstein, viola // Solisti New York Orchestra // Robin Sutherland, piano // Ransom Wilson, Artistic Director, conductor // Carmit Zori, violin // Eugenia Zukerman, flute

1994

Dante Anzolini, conductor // Christiaan Bor, violin, viola // The Canadian Brass // Jean-Michel Damase, composer, pianist // Barry Douglas, piano // Wu Han, piano // David Jolley, horn // George Manahan, conductor // Robert McDuffie, violin // Paul Neubaer, viola // Roberta Peters, soprano // Richard Schmid, painter // Solisti New York Orchestra // Robin Sutherland, piano // Ronald Thomas, cello // Ransom Wilson, Artistic Director, conductor // Carmit Zori, violin

1995

Bruce Adolphe, lecturer // David Agler, conductor // Stephen Balderston, cello // Manuel Barrueco, guitar // Joshua Bell, violin // Rob Bohmer, actor // Janet Bookspan, actor // Martin Bookspan, narrator // Carter Brey, cello // Free Flight, jazz ensemble // Nai-Yuan Hu, violin // Paul Neubauer, viola // Leontyne Price, soprano // Solisti New York Orchestra // Stephen Prutsman, piano // Robin Sutherland, piano // Stephen Taylor, oboe // Ransom Wilson, Artistic Director, conductor // Carmit Zori, violin

1996

Renata Arends, soprano // Stephen Balderston, cello // Arnold Bezuyen, tenor // Christiaan Bor, violin // Betty Buckley, singer, actress // David Dusing, tenor // James Galway, flute // Martin Goldsmith, lecturer // Anne Grimm, soprano // Timothy Hester, piano // Stephanie Houtzeel, mezzo soprano // Ted Libbey, lecturer // Kerry McDermott, violin // Paul Neubauer, viola // Hans Nieuwenhuis, director // Awadagin Pratt, piano // Anton Saris, baritone // Peter Schickele, author, composer, musician, satirist // Jonathan Sheffer, conductor // Roger Smeets, baritone // Solisti New York Orchestra // Robin Sutherland, piano // Claudia Waite, soprano // Ransom Wilson, Artistic Director, conductor

1997

Aldo Abreu, recorder // Claire Bloom, actress // Lawrence Dutton, viola // Ani Kavafian, violin // Ted Libbey, lecturer // Anne-Marie McDermott, piano // Peter Nero, piano // Paul Neubauer, viola // Itzhak Perlman, viola // Quartetto Gelato // Mary Margaret Sapp, soprano // Fred Sherry, cello // David Shifrin, clarinet // Solisti New York Orchestra // Kathryn Stewart, contralto // Robin Sutherland, piano // Ransom Wilson, Artistic Director, conductor // Samuel Wong, conductor // Carmit Zori, violin

1998

Bruce Adolphe, lecturer // The Canadian Brass // Nai-Yuan Hu, violin // Ani Kavafian, violin // Ted Libbey, lecturer // Alain Marion, flute // Mike Marshall, mandolin, guitar // Anne-Marie McDermott, piano // Edgar Meyer, bass violin // David Neubauer, contrabassoon // Paul Neubauer, viola // Itzhak Perlman, conductor, violin // Navah Perlman, piano // Peter Schickele, composer // Fred Sherry, cello // Solisti New York Orchestra // Andre Watts, piano // Ransom Wilson, Artistic Director, conductor, flute

Previous OKM Artists

1999
—
2020

1999

Bruce Adolphe, lecturer // Martin Bookspan, lecturer // Chanticleer, men's chorus // Simon Estes, bass-baritone // JoAnn Falletta, conductor // Ani Kavafian, violin // Anne-Marie McDermott, piano // Kerry McDermott, violin // Paul Neubauer, viola // Mark O'Connor, violin, fiddle // Christopher O'Riley, piano // Eric Ruske, horn // Fred Sherry, cello // Solisti New York Orchestra // Marija Stroke, piano // Ransom Wilson, Artistic Director, conductor, flute // Pinchas Zukerman, conductor, violin

2000

Emanuel Ax, piano // Martin Bookspan, lecturer // Christiaan Bor, violin // James Burritt, tenor // The Canadian Brass // Mariann Cook, soprano // Steven Condy, baritone // Jean-Michel Damase, composer // George Darden, piano // Misha Dichter, piano // Neil Fleitell, lighting designer, Alvaro Garcia, conductor // Bradley Garvin, bass // Martin Goldsmith, lecturer // Jonathan Hays, baritone // Ani Kavafian, violin // Leon Major, stage director // Martha Mann, costume designer // Anne-Marie McDermott, piano // Pedja Muzijevic, piano // Paul Neubauer, viola // Marion Pratinicki, mezzo soprano // Erhard Rom, set designer // Fred Sherry, cello // Beverly Sills, lecturer // Shon Sims, baritone // Solisti New York Orchestra // Charles Robert Stephens, baritone // Robert Swensen, tenor // Peter Wiley, cello // Ransom Wilson, Artistic Director, conductor, flute, Arianna Zukerman, soprano

2001

P.D.Q. Bach // Martin Bookspan, lecturer // David Dusing, tenor // Michele Eaton, soprano // Simon Estes, bass-baritone // Jim Walker and Free Flight // Martin Goldsmith, lecturer // P.S. Gordon, artist // Nai-Yuan Hu, violin // Ani Kavafian, violin // Anne-Marie McDermott, piano // Paul Neubauer, viola // Itzhak Perlman, violin // Marina Piccinini, flute // Peter Schickele, composer, musician, satirist // David Shifrin, clarinet // Solisti New York Orchestra // Robin Sutherland, piano // Ronald Thomas, cello // Andre Watts, piano // Ransom Wilson, Artistic Director, conductor, flute

2002

Karen Anderson, mezzo soprano // Reed Armstrong, narrator // Joshua Bell, violin // Martin Bookspan, lecturer // Borromeo String Quartet // Matthew Chellis, tenor // Coro Easo, Basque Men's Chorus // Jonathan Hays, bass // Ani Kavafian, violin // Ida Kavafian, violin // Gregory Keller, stage director // Matthew Lau, bass // Peter Lindskoog, bass // Los Angeles Guitar Quartet // Branford Marsalis, saxophone // Paul Neubauer, viola // Garrick Ohlsson, piano // Phyllis Pancella,

2002 (continued)

mezzo soprano // Andre-Michel Schub, piano // Solisti New York Orchestra // Ronald Thomas, cello // Helen Todd, soprano // Richard townsend, lecturer // Christopher Vaneman, lecturer, writer // Ransom Wilson, Artistic Director, conductor, Maria Zifchak, mezzo soprano

2003

Ahn Trio // Ik-Hwan Bae, violin // Bartlesville Symphony Orchestra // Sarah Chang, violin // David Connell, choir master // Barry Douglas, piano // Eric Fennel, tenor // Vincent Giroud, lecturer // Alexey Goroholinsky, clarinet // Lauren Green, conductor // Shinik Hahm, conductor // Wu Han, piano // Scott Lee, viola // Peter Lindskoog, bass // Ronald Luchsinger, stage director // Kerry McDermott, violin // Paul Neubauer, viola // The Chris Norman Ensemble // Anna Polonsky, piano // Aleksandr Popov, bassoon // Robert Sapolsky, baritone // Fred Sherry, cello // Shon Sims, baritone // Solisti New York Orchestra // Helen Todd, soprano // Eric Trudel, musical preparation // Claudia Waite, soprano // Ransom Wilson, Artistic Director, conductor, flute

2004

Bartlesville Symphony Orchestra // Bering Strait // Steven Condy, baritone // John R. Erickson // Branch Fields, bass-baritone // Sir James Galway, flute // Lauren Green, conductor // June Han, harp // Wu Han, piano // Troy Herring, soprano // Mikhail Kalinovsky, bass // Ani Kavafian, violin // Joel Levine, conductor // Andrea McFarren, soprano // Paul Neubauer, Music Director, viola // A. Scott Parry, director // Kyle Pfortmiller, baritone // Laura Pfortmiller, soprano // Anna Polonsky, piano // Vale Rideout, tenor // James Schaffner, tenor // Jane Shaulis, mezzo-soprano // Charles Schneider, baritone // Fred Sherry, cello // Solisti New York Orchestra // Rev. Dr. T. Lee Stephens // Andre-Michel Schub, piano // Ransom Wilson, Artistic Director, conductor, flute // Karen Winkler, soprano // Stephanie Woodling // James Wordsworth, baritone // Carmit Zori, violin

2005

Brett Aldridge, baritone // Bartlesville Symphony Orchestra // Byron Berline Band // Classical Kids // Lauren Green, conductor // Wu Han, piano // Michelle Jennings, soprano // Amy Justman, soprano // Tracy Kaufman, mezzo-soprano // Anne-Marie McDermott, piano // Daniel Neer, baritone // Paul Neubauer, Music Director, viola // Tara Helen O'Connor, flute // Elmar Oliveira, violin // Christopher Parkening, guitar // Josh Powell, baritone // Andrew Ranson, tenor // Matthew

2005 (continued)

Singer, baritone // Fred Sherry, cello // Solisti New York Orchestra // Ransom Wilson, Artistic Director, conductor, flute // Mark Watkins, baritone

2006

Amici New York Resident Orchestra // Andre Watts, piano // Andreas Delfs, guest conductor // Ani Kavfian, violin // Art of Motion Dance Studio // Bartlesville Ballet Centre // Bartlesville High School Steel Drum Band // Byron Berline Band // ConocoPhillips Gymnastics Club // David Taylor Dance Theatre // Diane Lesser, oboe // Ed McDade // Eric Gibson, stage director // Erica Kiesewetter, violin // Erin Keefe, violin // Fred Sherry, cello // Guillermo Figueroa, guest conductor // Inspirations Dance Studio // James Bagwell, conductor // Joyce Yang, piano // Light Opera Oklahoma // Nai-Yuan Hu, violin // Paul Neubauer, Music Director, viola // Raman Ramkrishnan, cello // Ransom Wilson, guest conductor // Scott Lee, viola // Tulsa Symphony Orchestra // Wu Han, piano

2007

Amici New York Resident Orchestra // Bartlesville High School Steel Drum Band // Jambalya Jazz Band // Byron Berline, fiddle // Joan Myers Brown, founder and Executive Dr. of Philadelphia Dance Company // Jiyoung Chung, piano // Philadelphia Dance Company // Mitch Corbin, guitar // JoAnn Falletta, guest conductor // Leon Fleisher, piano // Wu Han, piano // John Hickman, banjo // Katherine Jacobson-Fleisher, piano // Ida Kavafian, violin // Erin Keefe, violin // Erica Kiesewetter, violin // Joel Levine, guest conductor // Anne-Marie McDermott, piano // Kerry McDermott, violin // Maureen McDermott, cello // Edgar Meyer, bass, composer-in-residence // Paul Neubauer, Music Director, viola // Barry Patton, percussion // Richard Sharp, bass // Fred Sherry, cello // Steve Short, drums // Distant Thunder // Jimmy Webb, composer // Mason Williams, guitar // Robert Zubrycki, violin

2008

Amici New York Resident Orchestra // New York Theatre Ballet // 145th Army Marching Band // "The Real Band" // Michael Barnett, bassist // Barry Douglas, guest conductor, piano // Lilly Francis, violin, viola // Giancarlo Guerrero, guest conductor // Matt Haimovitz, cello // Ani Kavafian, violin // Ida Kavafian, violin // Peter Kolkay, bassoon // Michael Krajewski, guest conductor // Branford Marsalis, saxophone // Anne-Marie McDermott, piano // Peter Nero, piano // Paul Neubauer, viola // Mark O'Connor, violin // Anna Starzec, piano // Ben Vereen, actor,

2008 (continued)

dancer, singer // Frederica Von Stade, mezzo soprano // Peter Wiley, cello // Amy Yang, piano

2009

Amici New York Resident Orchestra // Houston Ballet II // Tall Cotton String Band // Adria Benjamin, conductor // Susan Boyd, alto // Gary Burton, piano // Elin Carlson, soprano // Fred Child, host // Chick Corea, piano // The Invincible Czars // Robin Fisher, Music Director, conductor // ConocoPhillips Gymnastics Team // Wu Han, piano // Nai-Yuan Hu, violin // Jonathan Joyce, baritone, bass // Jeffrey Kahane, conductor, piano // Diane Lesser, oboe // Janathan Mack, tenor // Anne-Marie McDermott, piano // Paul Neubauer, viola // Richard Perlmutter, "Beethoven's Wig" creator, lyricist, lead singer // City of Tulsa Pipes and Drums // Ewa Plonka, piano // Nadja Salerno-Sonnenberg, violin // Fred Sherry, cello // Kristin Chenoweth, soprano // Michael Stern, conductor // Robin Sutherland, piano // Time for Three // Peter Wiley, cello

2010

Amici New York Resident Orchestra // Bartlesville Symphony Orchestra // Fred Child, host // Joann Falletta, guest conductor // Bela Fleck, banjo // Lauren Green, conductor // ConocoPhillips Gymnastics Team // Zakir Hussain, percussion // Amy Jiaqi Yang, piano // Ani Kavafian, violin // Ida Kavafian, violin // Anne-Marie McDermott, piano // Kerry McDermott, violin // Edgar Meyer, composer // Kathleen Nester, flute // Paul Neubauer, Music Director, viola // Bartlesville High School Chamber Orchestra // Susanna Phillips, soprano // The Red Dirt Rangers // Andrew Sewell, guest conductor // Fred Sherry, cello // David Shifrin, clarinet // Alexander Sitkovetsky, violin // Celtic Spring // Bartlesville High School Steel Drum Band // Robin Sutherland, piano // Steven Tenebaum, viola // Time for Three // Kyle Turner, tuba // The Boye // Peter Wiley, cello

2011

Alloy Orchestra // Amici New York Resident Orchestra // Cherokee Children's Choir // Richard Clark, trombone // 145th Army Guard Concert Band // Hut Club of Cowtown // Jennifer Frautschi, violin // ConocoPhillips Gymnastics Team // Ida Kavafian, violin // Erica Kiedewetter, violin // Constantine Kitsopoulos, guest conductor // Anne-Marie McDermott, piano // Kerry McDermott, violin // Gustav Meier, guest conductor // Paul Neubauer, Music Director, viola // Paige Park, violin // Shotgun Party // Tulsa Pipe and Drums // Turtle Island Quartet // Erica Ruske, horn // David Shifrin, clarinet // Sublime Strings // Peter Wiley, cello // Amy Yang, piano // Robert Zubrycki, violin

2012

Alloy Orchestra // Amici New York Resident Orchestra // Geri Allen, piano // Teresa Buchholz, mezzo soprano // Terri Lyne Carrington, drums // Stillwater Chamber Singers // The

2012 (continued)

Carolina Chocolate Drops // Bartlesville Choral Society // Sasha Cooke, mezzo soprano // Kyle Dillingham, violin // Rhiannon Giddens, soprano // ConocoPhillips Gymnastics Team // Ani Kavafian, violin // Constantine Kitsopoulos, guest conductor // Kelyl Markgraf, baritone // Bill McGlaughlin, host // Edgar Meyer, bass // Daniel Mobbs, bass // Paul Neubauer, Music Director, viola // Anna Polonsky, piano // Antiphon Quartet // Leo Rondeau // Racheal Rosales, soprano // Daniel Ross, tenor // Esperanza Spalding, vocalist // Jame Stone, banjo // Orion Weiss, piano // Peter Wiley, cello // Josh Wright // Robert Zubrycki, violin

2013

Amici New York Resident Orchestra // Amici Woodwind Sextet // Barry Bales // Bryan Sutton // Becky Wallace // Constantine Kitsopoulos, Artistic Director, conductor // Enhake // Hot Club of Cowtown // John Kimura Parker // Luke Bulla // Miro Quartet // Noam Pikelnny // Norm Lewis // Paul Benjamin Band // Pilgrim // Ronnie McCoury // Wink Burcham

2014

Amici New York Resident Orchestra // Courtney Bray, vocalist // Bartlesville Choral Society // 145th Army Guard Concert Band // Siena Forest, soprano // Elizabeth Hays, vocalist // Sarah Jarosz, vocalist // Constantine Kitsopoulos, Artistic Director, conductor // Antonia Kitsopoulos, vocalist // Lyndon Meyer, piano // Miro Quartet // Jon Kimura Parker, piano // Eric Schaefer, vocalist // Patrick Schwartz, vocalist // Trey Smagur, vocalist // Lauren Stafford, vocalist // Lucas Tarrant, vocalist // Charles Temkey, vocalist // Sarah Elizabeth Williams soprano

2015

Amici New York Resident Orchestra // Nathan Baer, bass // Canadian Brass // Bartlesville Choral Society // Corky Davis Country Swing Band // John Dent, trumpet // Emily Dyer, soprano // Leslie Flanagan, baritone // Teyvyn Hill, vocalist // Chad Hoopes, violin // Constantine Kitsopoulos, Artistic Director, conductor // Antonia Kitsopoulos, Associate Stage Director // Lois Martin, viola // Susan Mueller, Bartlesville Choral Society conductor // Nathaniel Olson, baritone // Tulsa Oratorio Chorus // Louise Owen, violin // Jon Kimura Parker, piano // Jeffrey Picon, tenor // Aeolus Quarter // Tim Sharp, Tulsa Oratorio Chorus director // Judy Fu's Tai Chi Dancers // Tulsa Youth Symphony // Lucas Tarrant, baritone // Patricia Westley, soprano // Sarah Williams, soprano

2016

Adam & Kizzie // Bartlesville Symphony Orchestra // Dr. David Carter, clarinet // Caitlyn Caughell, vocalist // Kennedy Caughell, vocalist // Brightmusic Chamber Ensemble // Andres Franco, Tulsa Signature Symphony artistic director, conductor // Lauren Green, conductor // Daniel Hege, conductor // Anne-Marie McDermott, piano // Miro Quartet // Catherine Rusell, vocalist // Simply Three // Tulsa Signature Symphony // Tulsa Symphony Orchestra

2017

145th Army Band // Bartlesville Symphony Orchestra // Honey Blue // Burchfield Brothers // Tulsa Children's Chorus // Lauren Green, conductor // Modern Oklahoma Jazz Orchestra (MOJO) // Curtis Lee Scott, Muscogee Hymn Singer // Chris Mann // Michael Martin Murphey // Wilson Phillips // Miro Quartet // Ron Spigelman, guest conductor // Tulsa Symphony Orchestra // Brightmusic Trio Solari // Grant Youngblood, baritone // Gerhardt Zimmermann, guest conductor

2018

The Brent Giddens Band // Hector Guzman, conductor // Lucas Hoge // Katie Mahan, piano // Miro Quartet // Sons of Serendip // Tulsa Symphony Orchestra // Windsync, wind quintet

2019

Arielle // The Arcadian Wild // Dallas Brass // The Brent Giddens Band // Steep Canyon Rangers // Quartetto Gelato // The Gothard Sisters // Modern Oklahoma Jazz Orchestra (MOJO) // Cuarteto Latinoamericano // Jenny Lin, piano // Elena Martin, piano // Isaac McClung // Jose Meliton, piano // Anne Reburn // Ron Spigelman, guest conductor // Tulsa Symphony Orchestra // Phil Vassar

2020

Balsam Range, Dallas String Quartet*, The Clark Gibson Quintet, Tina Guo, acoustic and electric cello*

*live stream performance



Violin graphic by OKM 2020 Intern:
Victoria Polley

Becoming an OKM Music Patron

Your gift helps OKM positively impact the community of Bartlesville through music performance, education and outreach. **Ticket sales cover less than 30 percent of the funds required to produce the OKM Music Festival each year.** The annual success and future longevity of OKM Music depends on the generosity of corporate and individual patrons who make a tax-deductible contribution to the festival each year.

DID YOU KNOW...

A membership to OKM Music offers exclusive benefits for patrons only. In addition to the benefits listed on the next page, patrons receive our sincere thanks and deepest appreciation, combined with the personal knowledge that they are an integral part of something truly special - Oklahoma's premier music festival. So, please, join your friends, neighbors and colleagues in support of OKM Music. Pledge cards are available in our office at 415 S. Dewey Ave. or by request.

PERKS AVAILABLE TO OKM MUSIC PATRONS:

- Listing in festival program book
- VIP parking at Woolaroc
- VIP parking for concerts
- An invitation to the annual Patron Event
- The opportunity for early ticket purchases and prime seat selection
- The opportunity to Meet & Greet guest artists

(Benefits vary depending on the level of contribution.)

FOUNDERS CIRCLE

ALL Founders Circle Memberships come with the following benefits:

- Listing in festival playbill
- Early access to buy tickets for performances throughout the year
- Complimentary invitation to a Members-only reception in Ambler Hall
- Online access of Member Account

Friend \$100

Includes all Founders Circle Membership benefits, PLUS:

- Advance mailing of festival leaflet



Family \$150

Includes all Founders Circle Membership benefits, PLUS:

- Advance mailing of festival leaflet
- 25% discount on student and general admission tickets (K-12)
- 3 invitations (No Charge) to children's festival event of choice*
*excludes Princess Tea

Supporter \$500

Includes all Founders Circle Membership benefits, PLUS:

- Advance mailing of festival leaflet
- Member-only exclusive emails
- 10% discount in OKM store

Contributor \$1,000

Includes all Founders Circle Membership benefits, PLUS:

- Advance mailing of festival leaflet
- Member-only exclusive emails
- 10% discount in OKM store
- 2 invitations to Private Reception at concert of choice*
- VIP parking at Woolaroc event*

Benefactor \$2,500

Includes all Founders Circle Membership benefits, PLUS:

- Advance mailing of festival leaflet
- Member-only exclusive emails
- 15% discount in OKM store
- 2 invitations to Private Reception at concert of choice*
- VIP parking at Woolaroc and festival concerts*

Ambassador \$5,000

Includes all Founders Circle Membership benefits, PLUS:

- Advance mailing of festival leaflet
- Member-only exclusive emails
- 20% discount in OKM store
- Concierge service
- 4 invitations to Private Reception at concert of choice*
- VIP parking at festival concerts
- Option to underwrite artist of choice
- 4 reserved VIP concert seats (limited to one concert of choice)
- 4 VIP Meet & Greet during festival (limited to one concert of choice).

Guarantor \$10,000

Includes all Founders Circle Membership benefits, PLUS:

- Advance mailing of festival leaflet
- Member-only exclusive emails
- 20% discount in OKM store
- Concierge service

- 6 invitations to Private Reception at concert of choice*
- VIP parking at festival concerts
- Option to underwrite artist of choice
- 6 reserved VIP concert seats (limited to one concert of choice)
- 6 VIP Meet & Greet during festival (limited to one concert of choice)

Director's Circle \$15,000

Includes all Founders Circle Membership benefits, PLUS:

- Advance mailing of festival leaflet
- Member-only exclusive emails
- 20% discount in OKM store
- Concierge service
- 8 invitations to Private Reception at concert of choice*
- VIP parking at festival concerts
- Option to underwrite artist of choice
- 8 reserved VIP concert seats (limited to one concert of choice)
- 8 VIP Meet & Greet during festival (limited to one concert of choice)
- 8 backstage passes at concert of choice*
- 8 general seating concert tickets to concert of choice*

Producer's Circle \$25,000

Includes all Founders Circle Membership benefits, PLUS:

- Advance mailing of festival leaflet
- Member-only exclusive emails
- 20% discount in OKM store
- Concierge service
- 12 invitations to Private Reception at concert of choice*
- VIP parking at festival concerts
- Option to underwrite artist of choice
- 12 reserved VIP concert seats (limited to one concert of choice)
- 12 VIP Meet & Greet during festival (limited to one concert of choice)
- 12 backstage passes at concert of choice*
- 12 general seating concert tickets to concert of choice*

YOUNG PATRONS CIRCLE (under 35 yrs.)

ALL Young Patrons Circle Memberships include:

- Listing in festival program
- Early access to buy tickets for performances throughout the year
- Be the first to know what's happening each season through exclusive emails

Level One \$100

Includes all Young Patrons Circle Membership benefits, PLUS:

- 10% discount in OKM store

Level Two \$250

Includes all Young Patrons Circle Membership benefits, PLUS:

- 10% discount in OKM store
- Free admission for you and a guest to Oktoberfest or Christkindl Market

Level Three \$500

Includes all Young Patrons Circle Membership benefits, PLUS:

- 10% discount in OKM store
- Free admission for you and a guest to Oktoberfest or Christkindl Market
- Reserved Young Patrons Section at annual Woolaroc Concert in June
- 2 invitations to Private Reception at concert of choice*

Level Four \$1,000

Includes all Young Patrons Circle Membership benefits, PLUS:

- 15% discount in OKM store
- VIP parking at all festival concerts
- 8 general admission tickets to Oktoberfest
- Reserved Young Patrons Section at annual Woolaroc Concert in June
- 2 invitations to Private Reception at concert of choice*
- 2 VIP Meet & Greet during festival (limited to one concert of choice)
- 2 tickets to annual USO fundraiser

Level Five \$2,500

Includes all Young Patrons Circle Membership benefits, PLUS:

- 20% discount in OKM store
- VIP parking at all festival concerts
- Reserved table at Oktoberfest with complimentary beer and pretzels
- Reserved Young Patrons Section at annual Woolaroc Concert in June
- 2 invitations to Private Reception at concert of choice*
- 2 VIP Meet & Greet during festival (limited to one concert of choice)
- Special invitation to Founders Circle Member-only reception in Ambler Hall
- 2 backstage passes at concert of choice*

*subject to availability

Patrons of OKM Music

FOUNDERS CIRCLE

Founders Circle memberships positively impact the community of Bartlesville through annual giving in support of our festival and year-round programming.

Legacy Circle (\$100,000)

- Kenneth L. Smalley

Producer's Circle (\$25,000-\$99,999)

- Oklahoma Arts Council
- John and Mary Lynn Howk

Director's Circle (\$24,999 - \$15,000)

- H.A. & Mary K. Chapman Charitable Trust
- ConocoPhillips
- John Mihm
- Phillips 66

Guarantor (\$14,999 - \$10,000)

- Accenture
- Mary Lynn Mihm, Attorney at Law

Ambassador (\$9,999 - \$5,000)

- Paul & Ivery Anderson
- Margaret Boesiger
- Charlie and Senator Julie Daniels
- E.L. & Thelma Gaylord Foundation
- Jeanalee & Charles Parsons Foundation
- Mark and Debbie Haskell
- Jenk Jones
- Joe and Mary O'Toole
- Diversified Systems Resources
- Truity Credit Union
- Ernst & Young

Benefactor (\$4,999 - \$2,500)

- John Bond
- Charlie and Coralea Bowerman

- Bartlesville Community Foundation
- Ann & Gordon Getty Foundation
- Parsons Foundation
- Revo Financial (Jon Nettles)
- Tate Boys Tire & Service

Contributor (\$2,499 - \$1,000)

- Mary Louise Adams
- Betsy Barnes
- Bartlesville Convention & Visitors Bureau
- Roger H. and Angela Box
- Caroline Casselberry
- Dr. Bruce & Judith Carrico
- Gorman Management Company
- Don Cone
- Martin Smith and F. Price Connors
- Dr. and Mrs. Gary Dykstra
- Dr. F.C. Eaton
- Scott and Grace Farmer
- Daniel & Jeanne Strobe Family Foundation
- PMJJ Harmon Foundation
- Ginger and Anne Griffin
- Marion and Rose Hammerschmidt
- Henry F. and Ellen Kane
- Tim and Stephanie Koster
- Linda Kay Jones
- Linda Maholland
- Mike and Sandi May
- Dr. Anderson Mehrle
- Cassandra R. Mihm
- Bill & Ann Oglesby
- Kevin and Dorea Potter
- Narnie Roll
- Sandy and Jacquelyn Singleton
- Michael and Sonya Smith
- Howard Thill
- Virginia Whitmire
- John Williford

Supporter (\$999 - \$500)

- Anonymous
- Archambo Financial
- Arvest Bank
- Banc First
- Jerry and Marilou Bork
- Gregory Michael Burris
- Dr. Steven Casner
- Dr. Kyle and Kourtney Craig

- John Fish Jr.
- Ginger Griffin
- Fred Cook and Tom Graves
- Honey's Flowers
- John Fish Jr.
- KDC Enterprises Inc.
- Dr. Gale & Trina Joslin
- Betty Kane
- J W and Cheryl Kaufman
- Keleher Outdoor Advertising
- Keller Williams Realty
- Dr. Stephen Kirkpatrick
- Merl and Cheryl Lindstrom
- John and Melinda Mallet
- Moxie on Second
- Oklahoma Film Society
- Narnie Roll
- Richard and Kathleen Rutledge
- Jane Phillips Society
- Dr. Jen and Danielle Wong

Friend (\$499 and under)

- Jeannie Alaback
- Scott and Martha Ambler
- Sharon Ambler
- Mark Archambo
- T. Doyle and Nancy Armstrong
- Bartlesville Art Association
- Ken Baden
- Stride Bank
- Laura Barnes
- Joseph Barnes
- Jerold and Gail Barnett
- Bill and Vicki Beierschmitt
- David Bennett
- William Beever
- Terry Brown
- Frederick and Barbara Cohen
- Chris & Debra Cook
- Dennis and Susan Comito
- Martin Cox
- Carol Creel
- Stumpff Funeral Home & Crematory
- Betty Dalrymple
- Robbie Dall
- Harry and Mary Deathe
- Donald D. and Cheri Doty
- Charles and Janice Drake
- Ford and Vanessa Drummond
- Frederick and Janet Drummond
- Sybil Echeverri

Friend (continued)

- KCD Enterprises
- Roger Ernest
- James and Irene Ewing
- Faith Ann Foote
- Julie Foote
- Rachel Foote
- William Foote
- Fries & Fries P.C.
- Arthur and Carolyn Gorman
- Alma Henning
- Barbara Hoffman
- Gary and Becky Hoover
- Tom & Deborah Horton
- James & Leona Hutchins
- Cliff Jarrell
- Timothy and Linda Johnson
- William O. Johnstone
- Ken Jones
- Elizabeth B. Kane
- David King
- Sue Lacey
- Chasity Ladd
- Glenn and Angela Lancaster
- Dr. Joseph and Shirley LeBlanc
- John and Rita Leland
- Scott Lloyd
- Ryan Martin
- Sydnee Suzanne Mathews
- Wendy Meador
- Rebecca Likolehua Mankiller
- Rob Matthews
- Melanie Miller
- Marilyn Minter
- Stan and Susan Mueller
- Taylor Palmer
- Bruce and Velma Peterson
- Justin Pierce
- Price's Meat Market
- Phoenix Insurance
- Price Tower Arts Center
- Redeemer Lutheran Church
- Doug and Penny Quinn
- Bartlesville Radio
- Bill Schmidt
- Ann Sheldon
- Dylan Smith
- Sparklight
- Monika Stumpf
- Kristen Terell
- Sally A. Thomas
- Stephanie Elaine Thomas
- Spears Travel
- Dr. Brendon Swisher
- Frederico Vieira

CHAMBER SOCIETY

The Chamber Society endows and supports OKM's traditional classical concerts and programs. Through a generous endowment from Thomasane Chappel, OKM continues the OK Mozart tradition bringing world-renowned classical artists to the stage. The following patrons continue to support our classical repertoire.

- Mary Louise Adams
- Paul & Ivery Anderson
- Margaret Boesiger
- Charlie and Senator Julie Daniels
- Jenk Jones
- Joe and Mary O'Toole
- Kent and Kathleen Thomas
- Dr. Scott and Sigrid Williams

CHRISTKINDL MARKET SPONSORS

- Accenture
- LifeTime Memories by Ashley
- Bartlesville Art Association
- Mary Lynn Mihm, Attorney At Law
- La Fromagerie & Chocolate Boutique
- Wagon Wheel Bend Leather, Amy Butcher
- ConocoPhillips
- Staybright Tie Dyes, Leck Crawford
- From Lemon to Lemonade, Livi Diaz
- Super Centro, Norma Garcia
- Falling Leaf Creations, Ashley Green
- 5 Start Media Group
- Blockbuster Bows, Savannah Hayman
- Curious Relics Studio, Jessica Holeman
- Iron Bear Jewelry, Michelle Heath
- Bardew Valley Inn
- Tammy's \$5 Papparazzi Jewelry
- Tickled Heart, Paul and Karen Kwarcincki
- Elizabeth Lawrence
- Topsy Tree, OKM Music
- The Buttercup Market, Tracie Newcomb
- REVO, Jon Nettles
- Perky Rudolph, OKM Music
- Phillips 66
- Hillcrest Makers, Stacey Pehosh
- Good Shepherd Art, Jace Prather
- Price's Meat Market, Dean Price
- CAKES by LISSA, Lissa Rinta
- Moxie on Second, Christie Roberts
- Hadco Services

- Roark Acres-Okie Honey, Amanda Shepherd
- Usborne Books, Tamika Straw
- Blissful Bites by Allison, Allison Tran
- Truity Credit Union
- 3 Bulls Upcycling, Josh Waddell
- Angels Touched by Annette, Annette Walker
- Ernst & Young

OKTOBERFEST SPONSORS

- Scott Ambler
- Arvest Bank
- Central National Bank
- Betsy Barnes
- Margaret Boesiger
- Diversified Systems Resources, John Bond
- Super Centro
- Platinum Cigar Co.
- Price Connors
- Conoco Phillips
- Doenges
- Honey's Flowers
- Bartlesville Community Foundation
- Mark & Debbie Haskell
- John & Mary Lynn Howk
- Linda Jones
- Mary Lynn Mihm, Attorney At Law
- CAKES by Lissa
- Price's Meat Market
- John Mihm
- Bartlesville Monthly Magazine
- Bank of Oklahoma
- Phillips 66
- The Roszels
- Moxie on Second
- Spears Travel
- Truity Credit Union

The People of OKM Music

Board of Directors

Mary Lynn Mihm, Chairman
Price Connors, Co-Vice Chairman
John Mallet, Co-Vice Chairman
Tami Brinkman, Secretary
Bo Ball
Betsy Barnes (retired)
Nancy Dykstra
Noam Faingold, Ad Hoc, Resident
Composer
Brent Giddens, Resident Artist
Debbie Haskell (retired)
John Howk
Linda Jones (retired)
Linda Maholland
Howard Thill
Gopi Vasudevan, M.D. (retired)
Philip Wright

Finance Committee

John Howk
Stephanie Koster
Howard Thill

Management Committee

Price Connors
John Mihm
Mary Lynn Mihm-Howk
Howard Thill

Advisory Board

Diana Moon Adams
Roger Box
Glenn Cox
Charlie Daniels
Edd Grigsby
Bill Johnstone
John Williford

Auxiliary Board

Ryan Martin
Cassie Mihm
Brittney Berling
Jonathan Russell
Garret Giles
Wyatt Gerth

Properties Board

Scott Ambler
Jerold Barnett
Betty Dalrymple (retired)
Mary Lynn Mihm
Linda Maholland
Howard Thill

OKM Administration

Chairman of the Board,
Mary Lynn Mihm

Director of Marketing,
Ryan Martin

Director of Children's Programming,
Rose Hammerschmidt

Production Staff

Festival Production Manager,
Freya Downey

Social Media Intern,
Peyton Winter

Production Intern,
Victoria Polley

Acknowledgements

Use of the facilities

Bartlesville Community Center,
Val Callaghan & BCC Staff

Bartlesville Public Library

Copper Restaurant + Bar

Father Lynch Hall, St. John Before the
Latin Gate Catholic Church

Frank Phillips Home

Price Tower Art Center, Inn at Price
Tower

Rogers State University

Tower Center at Unity Square

Woolaroc, Bob Fraser & Staff

For Exceptional Support

Allegro Keyboards, Jeff Atkinson

Axiom Rental

Dr. Ben Baker

Bartlesville Community Center, Val
Callaghan

Bartlesville Convention & Visitors
Bureau, Maria Gus

Bartlesville Print Shop, Shawn
Roberts

Bartlesville Reserve Police
Department, Lloyd Guatney

Boy Scouts Troop 6, sponsored by
American Legion Post 105

City of Bartlesville, Lisa Beeman, Keeli
Williams

Nancy Dykstra

Moxie on Second, Christie Roberts

Oklahoma Arts Council

Oklahoma Tourism and Recreation
Department

Rogers State University

Saied Music Company

Mach Schnell

GAST Blaskapelle

GAST Dancers

Media Partners

Bartlesville Examiner-Enterprise and Bartlesville Magazine, Doug Graham, Kim Archer, Jamie Unkenholz

Bartlesville Monthly Magazine, Christy & Keith McPhail, Brian Engel

Bartlesville Radio KWON/KYFM, Dorea & Kevin Potter, Tom Davis, Tami Brinkman

Cox Media Group, Fox 23.com, David Sheridan

Craig's Photography, Melissa DeVivo

Five Star Media, Kasie Hixon

Green Country Marketing, Jordan Attebury

Keleher Outdoor, Janie & Dan Keleher

KJRH, Channel 2, Katie Keleher

KTUL, Channel 8, Sam McCombs

KUCO/KOSU, Paul Heath
Oklahoma Magazine, Vida Schuman

Sparklight, Ted Ramsey, Kathy Rogers, Jason Blex

Tulsa People, Andrea Canada

Tulsa World, William (Billy) Shay, James Watts Jr.

Exceptional Support for Children's Events

Bo Ball

Rachel Becker

Amanda Calhoun

Larent Carney

Bartlesville Community Foundation

Melissa DeVino

Michael Duncan

Rachel Foote

Denise Goeff

Jim Green

John Howk

Examiner-Enterprise

Shelley Koster

Tim Koster

Adam Lodrigueza

Jacky Manning

Laura Mercado

Miss Laura

Jenny Lin

Maira Melendez

Jon Nettles

Julie Pattison

Moriah Ross

Sasha Torres

Teresa Torres

Tamika Straw

Jasmine Zarate

Special Events Committee

Mary Lynn Mihm, Event Chair

Brenda Berling

Tami Brinkman

Mark Haskell

Debbie Haskell

John Hown

Linda Jones

Linda Maholland

Cassie Mihm

John Mihm

Rogelio Torres

Teresa Torres

Derek White

Jena White

Hospitality

C.A.K.E.S. by Lissa

DJ's Southern Snow

Domino's Pizza

Outpost Coffee Roasters

Price's Meat Market

Super Centro

Trader Joe's

Woolaroc Committee

Kary Cox

Lloyd Guatney

Charles Lewis

Tami Lewis

Ryan Martin

Mary Lynn Mihm

Dale Patterson

Peggy Rockery

Derek White

Volunteers

We especially thank our army of volunteers, both listed and not listed, but without whom this organization would not be possible. We appreciate every minute of time you give us and are eternally grateful.

Bo Ball

Debra Baker

Betsy Barnes

Shannon Barsby

Brenda Berling

Brittney Berling

Guy Berling

Kolby Brinkman

Tami Brinkman

Maria Carreno

Barbara Colson

Deb Cook

Chris Cook

Price Connors

Alex Coppenger

Todd Edwards

Grace Farmer

Becki Gaily

Ethan Gaily

Jennifer Gruber

Javier Hernandez

Janice Holland

John Howk

Linda Jones

Stephanie Koster

Tim Koster

Jacki Larmore

Susan Legal

Charles Lewis

Tami Lewis

Marvin Lewis

Amanda LaFrancois

Jordan Lundstrom

Linda Maholland

Andrew Marler

Nancy Lynn Megee

Laura Mercado

Cassie Mihm

John Mihm

Mary Lynn Mihm

Daren Milligan

Morgan Moore

Elouise Needleman

Carla Nichols

Krystal Shidler

Megan Stewart

Jonathan Russell

Jana Thresher

Sasha Torres

Teresa Torres

Rogelio Torres

Eva Valdez

Cloyd Wempe

Sandy Wempe

Peyton Winter

Derek White

Jena White

Preston Willis

Frank Wirth

Program Advertising Index

Thank you to all advertisers for their generous support and contribution to OKM Music:

Archambo	6
Bartlesville Community Center	8
Bartlesville Radio	32
Beethoven's 250th Birthday	Back Inside
Conoco Phillips	Back Cover
EY.....	27
Five Star Media Group.....	27
JT Paint and Design.....	23
KUCO 90.1 Classical Radio.....	27
Mary Lynn Mihm Attorney at Law	4
Oklahoma Arts Council	33
Oklahoma Film and Music	23
Phillips 66	Inside Cover
Quest Realty	23
Shelley Koster, Keller Williams Realty.....	39
Stumpff Funeral Home.....	50
Team Thill, McGraw Realtors.....	6

ADVERTISE WITH OKM MUSIC

Put your company in the *spotlight* by advertising in the 2021 OKM Music Festival program book! Your message will reach several thousand attending the Festival from June 11-17!

Contact: Ryan Martin • rmartin@okmozart.com

EXPERTS IN CREMATION

STUMPPFF
FUNERAL HOMES
& CREMATORY

Stumpff.org



Celebrating
**LUDWIG VAN
BEETHOVEN**

OKM MUSIC IS CELEBRATING THE 250TH
BIRTHDAY OF THIS GREAT COMPOSER.

VISIT:

[OKMMUSIC.ORG/BEETHOVEN250](https://okmmusic.org/beethoven250)

OKM
music



Providing energy for the world while staying committed to our values.

ConocoPhillips is proud to be an industry leader in finding and producing the oil and gas the world needs. At the foundation of our work is the commitment we have to our SPIRIT Values—Safety, People, Integrity, Responsibility, Innovation and Teamwork.

To learn more, visit www.conocophillips.com